

Streamer™ IP/ASI 8ch

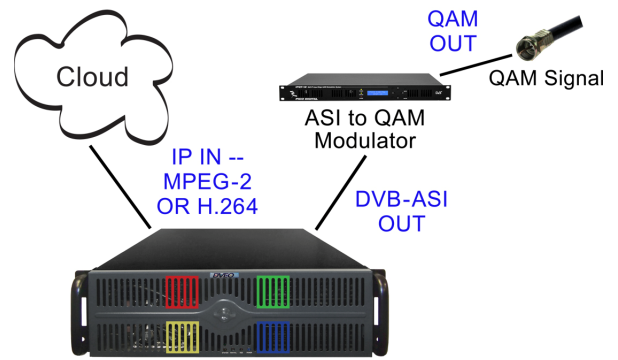
Broadcast quality, multichannel, standard or high definition (up to 1080p), embedded Linux® based, 3 RU, Intel® Xeon® 14 Core based, real time, H.264 to MPEG-2 Transcoder, Scaler, and Streamer for the IPTV and cable industries and others who need to deliver digital content in a cost effective way. Based on embedded Linux®, it boots quickly from flash drive and remembers all settings. Easy to use GUI allows full config of each stream and via SNMP can report its status to remote network operations. Will transcode and process multiple streams up to CPU limitations. Receives up to 8 SD or HD IP transport streams and outputs them over up to 8 ASI ports.

Features

- Input: IP (H.264, VC-1, or optional H.265)
- IP input protocols: UDP, RTP, RTSP, HTTP, HTTP Live, RTMP (pushed from Flash server)
- Output: 1, 2, 4, or 8 ASI Outputs – One ASI port per stream
- Receives HD and SD H.264/MPEG-4 AVC or optional H.265/HEVC transport streams over Ethernet-based Internet Protocol (IP) networks and converts them to MPEG-2 over DVB-ASI
- Supports NTSC and PAL
- Transcoding bit rates: .1 to 15 Mbps
- Resolutions: SQVGA, QCIF, QVGA, CIF, or any custom size up to 1080i/p
- SNMP, REST, SOAP support for remote management and monitoring
- Tested to work with Atlas™, Wowza®, and Adobe® Flash® media servers
- Audio output: MPEG-1 Layer II and/or optional “SurCode for Dolby Digital” AC-3
- Settings are remembered when power cycled
- Based on embedded Linux®
- Remote GUI includes some scheduling
- Redundant power supply

Applications

- Cable TV
- Telco TV



Overview

The **D-Streamer™ IP/ASI 8Ch** is a real time multichannel transcoder designed to receive IP transport streams and transform them into different codecs. It is designed to be scalable, easily adaptable, and field upgradeable to meet the needs of cable and IP network operators who are very comfortable with embedded Linux® based appliances. It relies on an Intel® 14 Core CPU as a transcode accelerator.

The **D-Streamer IP/ASI 8Ch** is an H.264 or optional H.265 to MPEG-2 transcoder or scaler. It receives up to 8 SD or HD IP transport streams, and outputs them over multiple ASI ports. The system transcodes individual streams into MPEG-2 format up to a maximum individual bitrate of 15 Mbps.

The system supports multiple H.264 inputs over GigE. Processing of PIDs and packets is transparent and does not depend on the content of each individual elementary stream.

D-Streamer IP/ASI 8Ch selects all required PIDs and multiplexes the demultiplexed transport stream packets.

The unit provides PID filtering of all unwanted traffic, increasing system performance and the number of channels, which can be transmitted per unit.

Each individual converted program channel consists of all necessary elementary streams and clocking information to present a synchronized A/V signal.

Programs can be forwarded (pushed) as transport stream packets. In addition to push, programs can be forwarded on request (pulled).



Computer Modules, Inc.

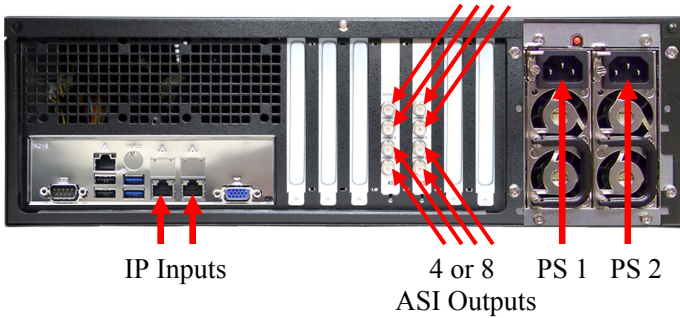
11409 West Bernardo Court

San Diego, CA 92127

Tel: 858-613-1818 Fax: 858-613-1815

www.dveo.com

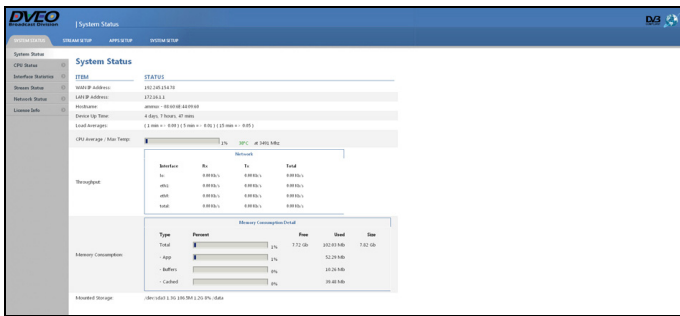
Input/Outputs



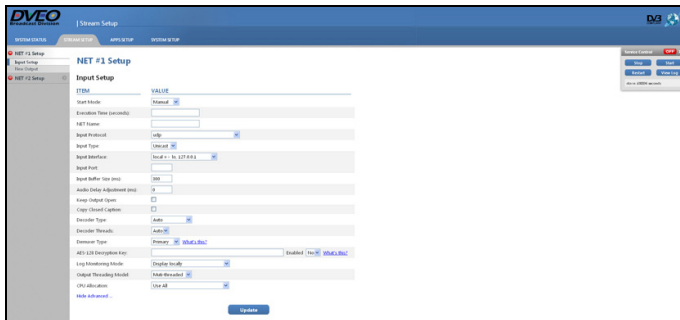
IP Inputs

4 or 8 ASI Outputs
PS 1 PS 2

GUI's



Status Screen



IP Input Setup

Ordering Information

D-Streamer IP/ASI 8Ch – 1, 2, 4, or 8 ch

Specifications

Supported Resolutions – Input

1920 x 1080	720 x 480	480 x 480
1280 x 720	704 x 480	480 x 320
720 x 576	640 x 480	320 x 240

Also supports any custom resolution not listed here.

Note: Lower resolution results in higher transcodes. Note: Supports closed captions.

IP Input

Input protocols:	UDP, RTP, RTSP, HTTP, HTTP Live, RTMP (pushed from Flash server)
Ethernet:	Two GigE, optional 10 GigE
Type:	IP-multicast, IP-unicast
Bit rates:	Multiple H.264 or optional H.265 video streams at different bit rates (.1 to 15 mbps)

DVB-ASI Output

Output:	DVB-ASI, 200 Mbps per port
Bit rates:	Multiple MPEG-2 video streams at different bit rates (.1 to 15 mbps)
Audio:	MPEG-1 Layer II, Optional AC-3

Administration

Access:	Web interface, SSH (Secure command line interface)
SNMP:	Monitoring and alerts
Scheduling:	On, Off support for timeslots

CPU and Operating System

CPU:	Intel® Xeon® 14 Core
OS:	DVEO embedded Linux® on SSD

Physical & Power

Size – 3 RU high:	19 x 5.25 x 25.2 inches (W x H x D) 48.26 x 13.34 x 64 cm (W x H x D)
Power Supply:	3U 760W – Redundant
Temperature Range:	Operating: 0°C ~ +50°C on Full Load Storage & Shipping: -20°C ~ +70°C
Non-operating Humidity:	5% to 95% non-condensing
Weight:	39 lbs. (17.69 kg)
Conformities:	UL, BSMI, CSA, FCC, CE, RoHS

Security

Ports security scanned to MIL requirements prior to shipment
--