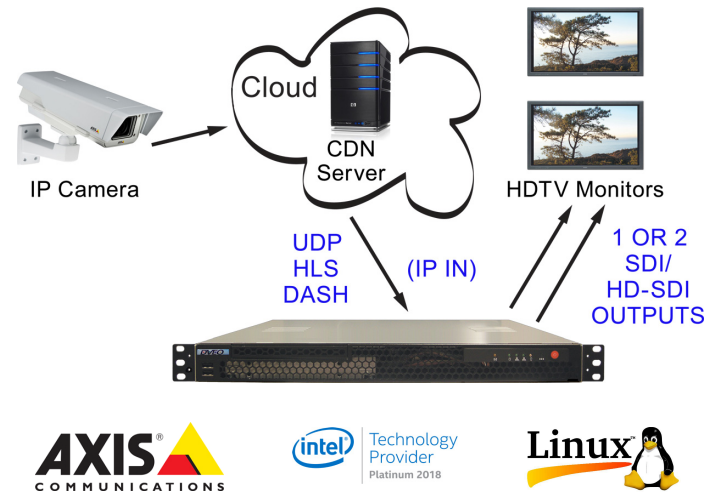


Streamer™ IP/DIG Axis Weather Cam

Real Time, 1 RU, Quick Starting, Embedded Linux® Based, Remotely Manageable, SD or HD, H.264/AVC Video and Audio Decoder for Receiving Live Streams with RTSP Input. Supports HTTP, RTSP, HTML, or RTMP (Pushed from Flash Server) In and Converts the H.264 AVC Compressed Digital Video and Audio into Professional Digital SDI or HD-SDI Output. Ideal Decoder for Receiving and Professional Decoding of Streaming Video from Axis Cameras. Tested to Work Over Public Internet, WiFi and RF Backbones.



Features

- Supports both HD and SD H.264/MPEG-4 AVC or MPEG-2 decoding
- Input: Bursty or Smooth IP
- Output: One or two channels of SDI and HD-SDI
- Security scanned for vulnerabilities
- IP Input protocols: HTTP Live (HLS), UDP, RTP, RTSP, HTTP, RTMP (pushed from Flash server)
- Supports H.264 High Profile @ Level 4.0 (HP@L4)
- Supports MPEG-2 as well
- Supports 1080p60, 1080i, 720p, 480i, 480p, CIF, QCIF, qHD, H.264 up with 29.97 or 59.94 and many others, and custom resolutions
- Supports HDTV output formats SMPTE-274M/ SMPTE-296M-2001, ITU-R BT.656
- Color Space: 4:2:0 for H.264 and MPEG-2
- Audio Input: AAC, MPEG-1 Layer II, optional MP3, and/or optional “SurCode for Dolby Digital” AC-3
- Audio Output: Embedded pass-through
- Remote GUI includes some scheduling
- SNMP, REST, SOAP support for remote management and monitoring
- Relies on Intel® Xeon® processor
- Supports Octoshape™ Client, upLynk™, and Infinite Uplink™ on GUI

Applications

- Axis IP camera decoder for On Air use

Overview

Streaming video via RTSP or RTMP is the most efficient methodology for delivering SD and HD content from IP cameras over the public internet. IP cameras don't always bring back broadcast quality frame rates inasmuch as they are geared towards low cost applications. Broadcast platforms are more stringent in that they expect 30 fps with a constant bit rate.

Thanks to some unique algorithms the **D-Streamer IP/DIG Axis Weather Cam** can deliver a professional quality decoding experience for broadcasters who wish to put their IP camera outputs on the air.

This embedded Linux® based unit is designed to be affordable, scalable, and extendable. Modifications to video formats are easily created. Remote management and multi level security is built in.

DVEO
Digital Video ExtraOrdinaire™

Computer Modules, Inc.

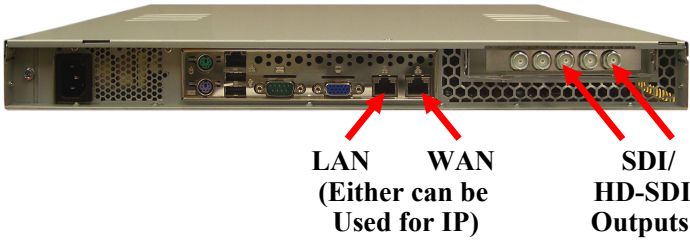
11409 West Bernardo Court

San Diego, CA 92127

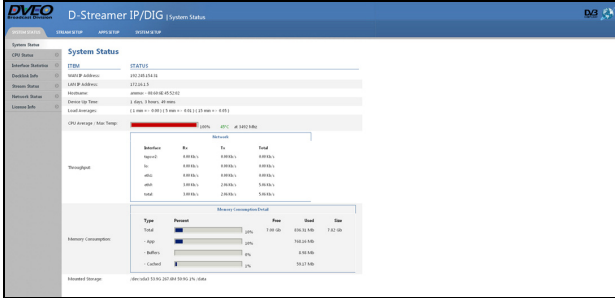
Tel: 858-613-1818 Fax: 858-613-1815

www.dveo.com

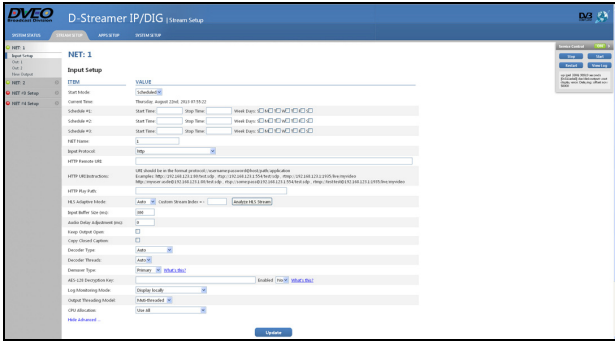
Inputs/Outputs



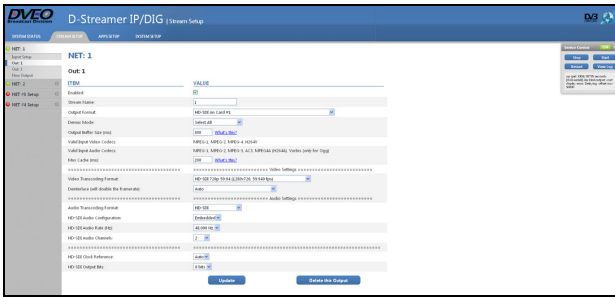
Sample of GUIs



System Status



Scheduled IP Input Setup



HD-SDI Output Setup

Ordering Information

D-Streamer IP/DIG Axis Weather Cam – 1 to 2 SDI/ HD-SDI outputs

Note: Unit supports Bosch and other brands of IP cameras

© 2018 Computer Modules, Inc. DVEO and D-Streamer are trademarks of Computer Modules, Inc. Intel and the Intel logo are trademarks of Intel Corporation in the U.S. and/or other countries. All other trademarks and registered trademarks are the properties of their respective owners. All rights reserved. Specifications are subject to change without notice. AAC licensed via Via Licensing.

Specifications

Supported Resolutions – Input

1920 x 1080	720 x 480	480 x 480	qHD
1280 x 720	704 x 480	480 x 320	H.264up
720 x 576	640 x 480	320 x 240	

Also supports any custom resolution not listed here. Note: Supports closed captions.

IP Input

Input:	Single Channel Gigabit Ethernet port (RJ45)
Audio Input:	AAC, MPEG-1 Layer II, optional MP3, and/or optional “SurCode for Dolby Digital” AC-3
Input “wrappers”:	HTTP Live (HLS), UDP, RTP, RTSP, HTTP, RTMP (pushed from Flash server), Octoshape™
Type:	IP-multicast, IP-unicast
Remote Setup – IMPORTANT:	User may need to assign static IP or provide access to router

SDI/HD-SDI Output

Video:	Up to 2 SDI or HD-SDI (Blackmagic) outputs, with Genlock
Audio:	Embedded pass-through
Resolutions:	Up to 1080p60

Administration

Access:	Web interface, SSH (Secure command line interface)
SNMP:	Monitoring and alerts
Scheduling:	On, Off support for timeslots

CPU and Operating System

CPU:	Intel® Xeon® processor
OS:	DVEO embedded Linux® on SSD

Physical & Power

Size – 1 RU (W x D x H):	19 x 14.96 x 1.7 inches (483 x 380 x 43.4 mm)
Voltage:	100-240V, 4-2A, 60-50 Hz, 220 watts
Operating Temperature:	10°C to 35°C
Non-operating Humidity:	20% to 90% non-condensing
Weight:	15 lbs. (6.8 kg)
Conformities:	UL, BSMI, CSA, FCC, CE, RoHS

Security

Ports security scanned to MIL requirements prior to shipment
--



Computer Modules, Inc.
 11409 West Bernardo Court
 San Diego, CA 92127

Tel: 858-613-1818 Fax: 858-613-1815

www.dveo.com