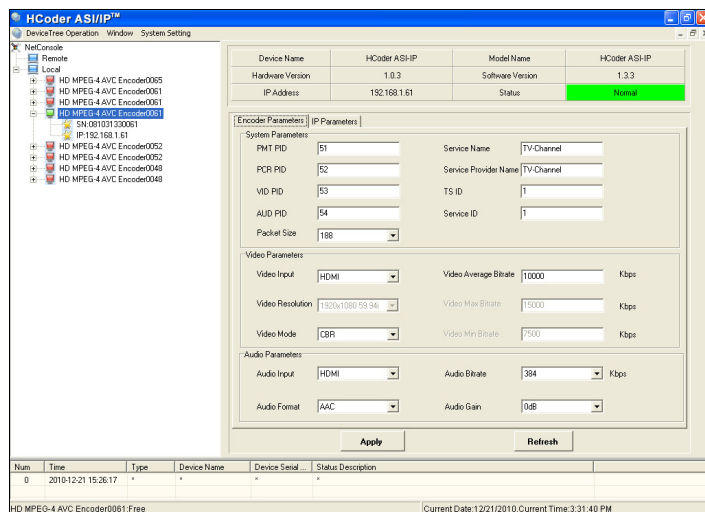


HCoder Analog+HDMI+ HD-SDI/ASI+IP™

Broadcast Quality, Full Featured, Industry Compliant, Remotely Manageable, 1 RU, Standard and High Definition Fujitsu® Chip Based H.264 AVC Part 10 Encoder with HDMI, Component, SDI, HD-SDI, and CVBS Inputs and Both ASI and IP Outputs. Audio Support Includes Analog in, or Embedded Audio. Audio Output is AAC, MPEG-1 Layer II, or Dolby Digital® AC-3 Passthrough. Tested to Work with Most Decoders and with Wowza® and Adobe® Flash® Servers. Features Pro-MPEG FEC SMPTE 2022. Features VBR or CBR (Constant Bit Rate) Output. CBR Setup Enables Great IP Video Delivery with our Virenza-S+S2™ IP H.264 Decoder.



Front View



User Interface

Features

- Input: HDMI, SDI/HD-SDI, YPbPr, or CVBS
- Output: Two identical ASI outputs and one GigE IP output (Simultaneous)
- Supports both H.264 HD and SD encoding with auto detection
- Supports IP unicast and multicast
- Supports Pro-MPEG Code of Practice #3 (CoP3) Forward Error Correction (FEC)
- Supports SI (SDT) and edit function
- Real-time HDTV video & audio compressions
- Fully compatible with H.264/MPEG-4 AVC encoding
- Supports H.264 High Profile @ Level 4.0 (HP@L4)
- Supports 1080i and p, 720p, and 480i
- Supports HDTV input formats SMPTE-274M/ SMPTE-296M-2001, ITU-R BT.656
- Supports IP output UDP or RTP protocol as well as ASI output
- Supports VBR or CBR – Unusual Feature
- Audio Input: Analog, SDI Embedded, or HDMI Embedded
- Audio Output: MPEG-1 Layer II, AAC, or Dolby Digital® AC-3 passthrough
- Configure and operate via front panel controls or remote management
- HDCP passthrough
- MPEG LA licensed
- Boots up in approximately 35 seconds
- Matching decoder available (Virenza™)
- Now shipping with 1080p support

Applications

- Backhaul applications
- Send HD or SD video via private IP networks
- Electronic News Gathering (ENG)
- STL with FEC

Overview

H.264, also known as MPEG-4 Part 10, or MPEG-4 AVC, uses less than 60% of the bandwidth of MPEG-2, but delivers the same quality of video. It is now the preferred codec for delivering standard and high definition video for cable, satellite and telco TV.

The HCoder Analog+HDMI+HD-SDI/ASI+IP™ is DVEO's newest broadcast-grade high definition or standard definition H.264 encoder with simultaneous GigE IP and dual DVB-ASI outputs. The input can be HDMI, SDI/HD-SDI, Component (YPbPr), or CVBS.

The HCoder features amazing quality with HDTV resolutions up to 1920 x 1080 x 30p, 60i/50i. The system includes LCD front panel controls and remote management software. Audio encoding is MPEG-1 Layer II, AAC, or Dolby Digital (AC3) passthrough.

The HCoder is ideal for backhaul applications and electronic news gathering (ENG).

The HCoder is based on advanced Fujitsu® encoding chipsets which provide for superior quality.



Computer Modules, Inc.

11409 West Bernardo Court

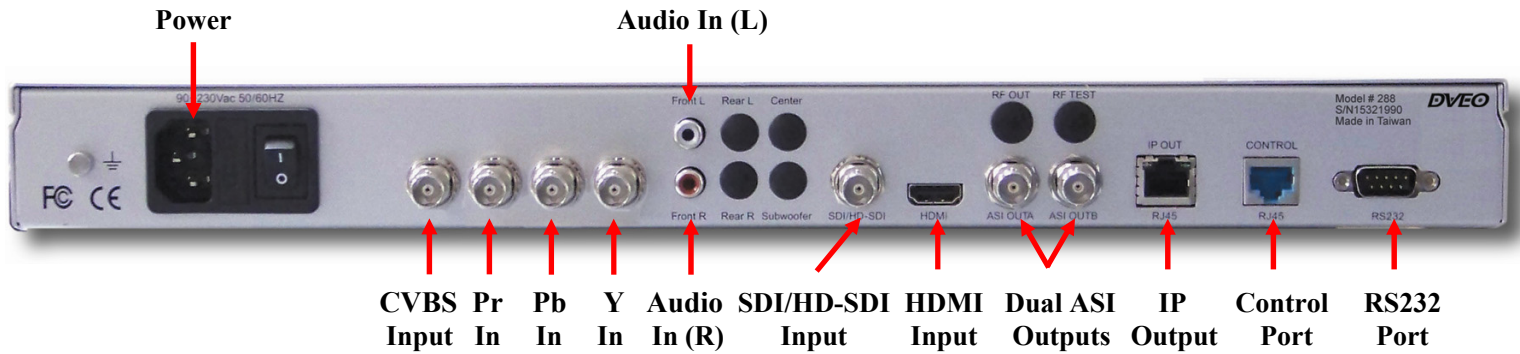
San Diego, CA 92127

Tel: 858-613-1818 Fax: 858-613-1815

www.dveo.com

HCoder Analog+HDMI+HD-SDI/ASI+IP™

Rear View



Specifications

Inputs

Inputs:	Video: HDMI, SDI/HD-SDI, YPbPr, CVBS Audio: HDMI, SDI embedded audio, Analog Audio (Front R/L, Rear R/L, Center, Subwoofer)
Connectors:	BNC 75 ohm, HDMI, SPDIF (Audio)

Outputs

Dual ASI outputs:	TS, 2 ports, BNC 75 ohm
IP:	TS over IP, 1 GigE Ethernet, RJ45
IP Protocols:	UDP, RTP, Pro-MPEG COP3 FEC-SMPTE 2022, IGMP

Video Encoding

Standard:	H.264/MPEG-4 AVC High Profile @ Level 4.0 (HP@L4)
Resolution and Frame Rates:	Progressive mode: 1920x1080p (60 Hz, 59.94 Hz, 50 Hz, 24 Hz, 23.98 Hz) 1280x720p (59.94 Hz, 50 Hz, 24 Hz, 23.98 Hz) Interlace mode: 1920x1080i (30 Hz, 29.97 Hz, 25 Hz) 1280x720i (30 Hz) 720x480i (29.97 Hz) 720x576i (25 Hz)
Bit rate:	2-20 Mbps Max for both SD and HD
MPEG Types:	VBR or CBR
Latency:	Approximately 500 milliseconds
Boot up time:	Approximately 35 seconds
Chroma Resolution:	4:2:0

Audio Encoding

Standards:	MPEG-1 Layer II, AAC, Dolby Digital® AC-3 passthrough
Sampling Frequency:	48 KHz
Channels:	1 Stereo or 2 Single

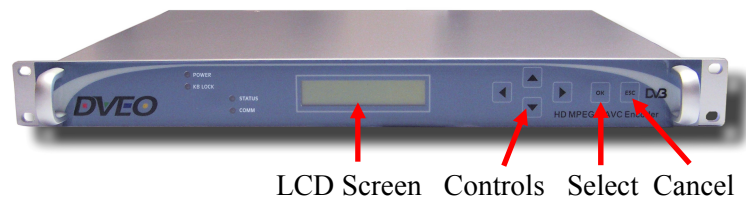
Control & Monitoring

Front panel:	2x20 LCD display, Control keys Configuration and Alarm messages
Remote:	Remote control via 10/100M Ethernet Web-based management software controls the unit and detects alarms remotely

Physical & Power

Power Supply:	100~240 VAC, 47~63 Hz
Power:	<30W
Dimensions:	1 RU 19 inch rack 19" (W) x 13" (D) x 1.7" (H) 48.3 cm (W) x 35.5 cm (D) x 4.3 cm (H)
Operating Temp.	+0 ~ +50°C (32 to 122°F)
Storage Temp.	-20 ~ +50°C (-4 to 122°F)
Weight:	5.29 lbs. (2.4 Kg.)
Conformity:	FCC, CE, RoHS
Power Cable:	USA plug or Euro plug on request

Front Panel View



Ordering Info

HCoder Analog+HDMI+HD-SDI/ASI+IP