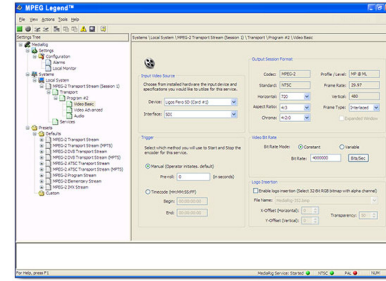


MPEG Legend™

Real Time, Easy To Use, Professional Broadcast Quality, Standard Definition, Full D1 Resolution, Software Based 4:2:0 or 4:2:2 MPEG-2 Content Origination Encoder with Composite or SDI Inputs and MPEG-1 Layer II or AC-3 Audio. Encodes at 500 Kbps-15 Mbps at 4:2:0 and 1.5-50 Mbps at 4:2:2 to On Board Hard Drive or to ASI/IP Outputs. Supports Both SI and PSIP Tables.



Features

- Software-based real-time DVB MPEG-2 encoder
- Input – Two versions: Analog composite or SDI
- Output: DVB-ASI, UDP Multicast via IP, or hard drive
- Video Format: ISO/IEC 13818-2 MPEG-2 (MP@ML and 4:2:2P@ML)
- NTSC and PAL (with support for 4:2:2 Expanded Window)
- Encoding Rates: 500 Kbps to 15 Mbps (4:2:0); 1.5 to 50 Mbps (4:2:2)
- Closed captioning: DVS 157, EIA-608 Line 21, and EIA-708-B
- Supports ATSC outputs with 16x9 aspect ratio and PSIP tables
- Constant and variable bit rate modes
- Logo/bug static image insertion and positioning within video stream
- Video noise reduction pre-filtering and scene detection options for optimal quality
- Support for frame rates of 29.97 and 25 fps
- Supports (HxV) 720x576, 704x576, 720x480, 704x480, 480x480, 352x480, among other resolutions
- Option: Available with ASI to SMPTE 310M converter

Applications

- Encoding analog video for transmission over satellite uplinks or IP
- Delivery of live video program streams to the head-end or production studio
- Ideal for news gathering or sports events
- Transmission of movie or video "dailies"
- Remote broadcasts
- Video over IP

Overview

The MPEG Legend™ is a very high-quality MPEG-2 encoder suitable for a wide range of professional applications in both North America (ATSC) and Europe. It offers many features at an affordable price, making it a long-time favorite with broadcasters and content providers.

The MPEG Legend supports standard definition MPEG-2 (MP@ML and 4:2:2P@ML) or analog composite video, NTSC or PAL. Video output is broadcast quality MPEG-2 transport streams via ASI, multicast streams via on board RJ45 IP ports, or files captured on the hard drive. Audio processing is MPEG-1 Layer II or AC-3.

This encoder can be ordered with either SDI or analog composite input. The MPEG Legend is built into a reliable Dell R300 one-rack unit.

The MPEG Legend supports customization of PSIP tables, variable bit rates, and closed captioning for all On Air broadcast applications. For European users, it also supports customization of PSI/SI tables. And for North American users, it includes 16x9 aspect ratio conversion.



11409 West Bernardo Court
San Diego, CA 92127

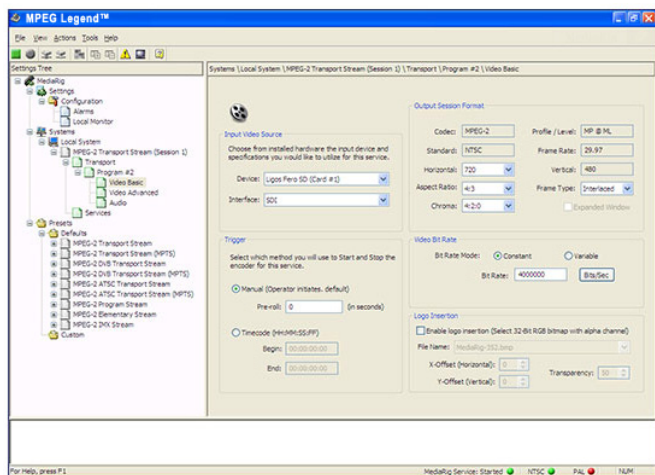
Tel: (858) 613-1818 Fax: (858) 613-1815

www.dveo.com

Highlights

- Easy to use graphical user interface
- Exclusive techniques for motion estimation and rate control that result in picture quality that exceeds that of many hardware encoders
- Reduced latency mode achieves latency as low as 600 milliseconds
- Supports customization of PSIP tables, VBI, and closed captioning for all On Air broadcast applications
- Supports customization of PSI/SI tables for European users
- Includes 16x9 aspect ratio conversion option for North American users
- Genlock input with analog option
- Available on optional high performance Dell 1960 server, with dual power supply

Main GUI



Specifications

Input Formats	
Video Input	Analog composite per SMPTE 170M, BNC and/or Digital SDI @270Mbps per SMPTE 269M, BNC
Standards	NTSC and PAL
Closed Captioning	DVS 157, EIA-608 Line 21, and EIA-708-B
Audio Input	Two stereo pairs or four independent mono channels
Analog Audio	Balanced; up to four total channels
Digital Audio	SDI embedded
Processing	
Video Formats	ISO/IEC 13818-2 MPEG-2 (MP@ML and 4:2:2P@ML) including 4:2:2 D-10 Sony IMX
Encoding Rates	500 Kbps to 15 Mbps (4:2:0); 1.5 to 50 Mbps (4:2:2)
Horizontal Res.	720, 704, 544, 528, 480, and 352
Vertical Res.	576, 480, and 4:2:2 Expanded Window
Frame Rates	29.97 and 25 fps
Aspect Ratios	1:1, 4:3, 19:9, 2.21:1
Audio Formats	ISO/IEC 11172-3 MPEG audio Layer II Uncompressed PCM file (WAV) Dolby Digital (AC-3) 2 channel
Audio Encoding Bit Rates	MPEG audio Layer II: 64 to 384 Kbps Dolby Digital (AC-3): 56 to 640 Kbps
Sampling Freq.	16-bit 48 KHz
Output Formats	
Transport Streams	SPTS/SCPC or MPTS/MCPC, program and elementary stream options
DVB-ASI	Output via BNC
IP	UDP multicast streaming over IP
Files	Output to file(s) on hard drive
Tables	Static PSIP and PSI/SI
Standard System	
System	Dell PowerEdge® R300 – 1 Gig RAM, 300 GB hard drive
Operating System	Windows® XP Professional
Video	Embedded ATI ES1000, 16 MB memory
Physical	
Rack Mount	1 RU
Dimensions	1.68" high x 17.6" wide x 21.5" deep (4.27 cm x 44.7 cm x 54.61 cm)
Weight	26 lbs. (11. kg)
Power	345W single power supply, 110/220 volts
Operating Temp.	10° to 35°C (50° to 95°F)
Storage Temp.	-40° C to 65° C (-40° F to 149° F)
Humidity	20 to 90 %, non-condensing

Ordering Information

MPEG Legend A (Analog) or MPEG Legend D (Digital)

© 2009 Computer Modules, Inc. DVEO and MPEG Legend are trademarks of Computer Modules, Inc. All other trademarks and registered trademarks are the properties of their respective owners. All rights reserved. Specifications are subject to change without notice.


11409 West Bernardo Court
San Diego, CA 92127
Tel: (858) 613-1818 Fax: 858-613-1815
www.dveo.com