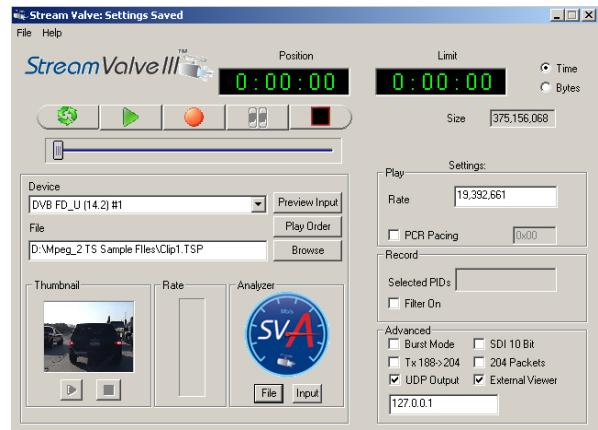




Stand Alone MPEG-2 or H.264 Transport Stream Player/Recorder Software Application with Support for DVB-ASI In and Out Cards for Continuous Playback and/or Capture of Selected Transport Streams – Includes TS Analyzer/Viewer, Remote Management, Transport Streams for Test Purposes



Main GUI with viewer

Features

- MPEG-2 or H.264 Transport Stream (SPTS or MPTS) playback and capture
- Transport Streams can be selected by PIDs
- Plays and Captures TS from all well known Video Encoders, Decoders, and Servers including Harmonic®, Tandberg®, Omneon®, Tektronix®, Radyne®, Big Band®, Seachange®, Scopus®, and many others
- Playback rates of up to 210 Mbits with fast SCSI hard drives
- Captures to standard IDE hard drive at 60 Mbps
- Plays back a sequence of transport streams
- Input: TS via CD, 100 BT, GigE, or DVB-ASI
- Output: TS via DVB-ASI
- Includes automatic TS analysis utility with PID and PCR clock info (Needs CBR for best result)
- Automatically uses the TS PCR info to calculate proper transport stream rate
- Selectable 188/204 packet size with auto conversion
- Continuous play or single play modes
- Buffer Overrun or Underrun warnings
- Option: custom transport streams can be provided

Applications

- Capture or playback transport streams for testing
- Record and analyze transport streams in digital head-ends
- Development labs, manufacturing shop floors, and trade shows where users need to either capture and playback, or just continuously playback transport streams in real time
- Analyze and preview transport streams

Overview

MPEG transport streams are specialized MPEG-2 or H.264 streams with features necessary to enable them to run on any MPEG-2 or H.264 decoder. Transport stream asset management is important for anyone interested in capturing or playing back video assets or “clips” to test their signal paths or the robustness of their equipment, or sharing their transport stream content with others.

This application is designed to provide an easy-to-use and intuitive interface that will give you a quick way to analyze, capture, filter, play, and view single and multiprogram streams.

Prior to capturing a transport stream, one needs to analyze it. Our built-in transport stream analyzer provides a complete view of all the SI or PSIP tables. Click on a PID and the analyzer will present considerable information about that PID – such as 1) stream type, 2) stream tag information, 3) packet counts, 4) stream statistics, 5) CRC error counts, 6) packet size, 7) bit rate.

Besides having capture and playback ability, **StreamValve™ III** allows you to filter out selected PIDs that you do not wish to record. This way you can capture only the PIDs desired.

In order to provide confidence to the capture process, we have included a copy of the VideoLAN VLC viewer, which allows you to decode and view any of the incoming or captured streams.

A VCR-like interface provides complete control over the capture and playback process. A recent feature is remote management capability. This allows you to record, start, stop, or play via a remote browser. This is greatly appreciated by anyone using this with an automation system.

For those wishing to have perfect “cut” on iframe boundaries, we recommend VideoReDo™. This program does an excellent job of cutting transport streams on iframe boundaries. This way splice points are not discontinuous and looping videos do not “break up”.


Computer Modules, Inc.
11409 West Bernardo Court
San Diego, CA 92127
Tel: (858) 613-1818 Fax: (858) 613-1815
www.dveo.com

MPEG-2 PSI Tables:

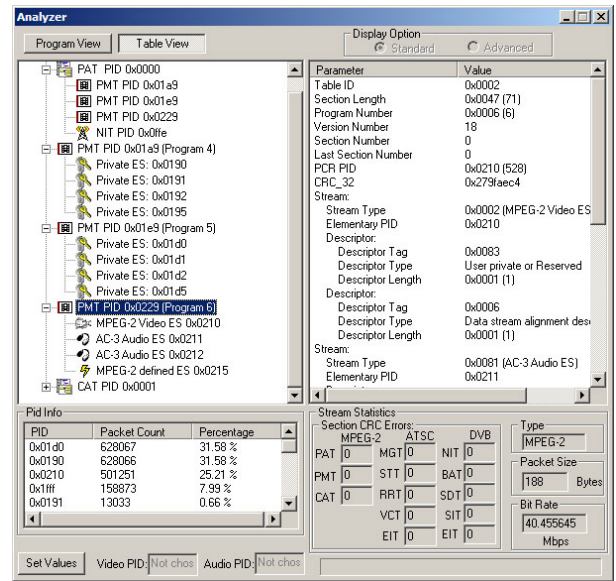
- Program Association Table (PAT)
- Conditional Access Table (CAT)
- Transport Stream Description Table (TSDT)
- Program Map Table (PMT)
- Network Information Table (NIT)

ATSC PSIP Tables:

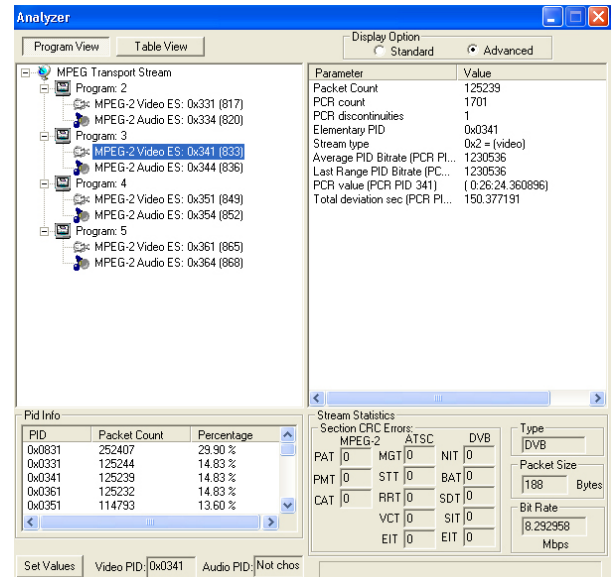
- Master Guide Table (MGT)
- Directed Channel Change Table (DCCT)
- DCC Selection Code Table (DCCSCT)
- System Time Table (STT)
- Region Rating Table (RRT)
- Terrestrial Virtual Channel Table (TVCT)
- Cable Virtual Channel Table (CVCT)
- Event Information Table (EIT)
- Extended Text Table

DVB-SI Tables:

- Bouquet Association Table (BAT)
- Network Information Table (NIT)
- Service Description Table (SDT)
- Event Information Table (EIT)
- Time and Date Table (TDT)
- Time Offset Table (TOT)
- Running Status Table (RST)
- Stuffing Table (ST)
- Discontinuity Information Table (DIT)
- Selection Information Table (SIT)



Analyzer GUI – Table View
(Displays the table data stored in the Transport Stream)



Analyzer GUI – Program View
(Displays programs and their corresponding elementary streams in the Transport Stream, plus Bitrate, PIDs, and PCR information)



Computer Modules, Inc.
11409 West Bernardo Court
San Diego, CA 92127

Tel: (858) 613-1818 Fax: (858) 613-1815

www.dveo.com

Highlights

- Multi-stream architecture allows *simultaneous recording of up to four transport streams with four DVEO cards, or one four channel DVEO card*
- Automates capture and playback with new online remote management features
- Includes transport stream analyzer and video viewer
- Ships with transport streams for test purposes

Typical Configuration

- Operating System: Windows® XP, Windows® 7
- RAM: 1 GB
- Two IDE hard drives – One for system, one for data
- For high bit rates above 60 Mbps we suggest SCSI drives or RAID subsystems

Ordering Info

StreamValve III / ASI
Option – Custom transport streams

Compatible DVEO Cards

- DVB Master Dual/i FD
- DVB Master 2i/2o
- DVB Master FD
- DVB Master FD LP
- DVB Master FD-B
- DVB Master FD-BR
- DVB Master FD-R
- DVB Master FD-U
- DVB Master III Rx
- DVB Master III Tx
- DVB Master III Tx LP
- DVB Master Quad/i
- DVB Master Quad/o

StreamValve III is also compatible with all PCIe versions of the cards shown above.

Remote Management GUI

Stream Valve Control Stream Valve Log

Status: Running

Source/Destination File
E:\mpeg_2 TR Streams Samples Drive: [A:] Browse Clear

Time Bytes

Position: 00:00:00 Limit(s or KB): 00:00:00

LOOP PLAY ONCE RECORD STOP

Play Settings
Rate(bps): 19392008
 Tx Jitter Reduce
PCR PID(hex): 0x00

Record Settings
 Filter PIDs

Advanced Settings
 Tx Burst Mode SDI 10 Bit Mode
 Tx 188 to 204 Byte Packets 204 Byte Packets
 UDP Output To: 127.0.0.1 <- Local Ip

Web Control GUI