

# T-Mux™/8

**Professional TS Multiplexer with 8 DVB-ASI Inputs – Combines 2 to 8 MPEG-2 and/or H.264 Transport Streams, SPTS or MPTS. Features Two ASI Outputs. Automatically Re-generates PSI and SI Tables. PSI/SI Generator Support for DVB Table Editing. Able to Insert Electronic Program Guides and Other Data. Can be Used to Edit Existing PSIP Tables. Useful for Removing Services from MPTS Streams.**



Rear



Front

## Features

- Multiplexes two to eight transport streams (SPTS/MPTS)
- Muxes MPEG-2 and H.264/MPEG-4 AVC streams
- Two mirrored DVB-ASI transport stream outputs
- Configurable output rate
- PSIP table manipulation
- PID re-mapping and transport stream processing
- PSI/SI auto-generation and processing
- PSI/SI generator support for DVB table editing and electronic program guide (EPG) insertion
- Private data insertion
- Configures up to 40 transport streams under NIT table
- PCR check and CBR output
- Monitors all eight inputs in real time
- Configure and operate via front panel controls or web-based remote management
- Works with all major professional equipment in the market
- Will retain PID structure when any input is disconnected

## Applications

- Small to medium re-multiplexing and stream processing applications
- Satellite or Cable broadcasting
- Local transport stream creation
- Head-end applications

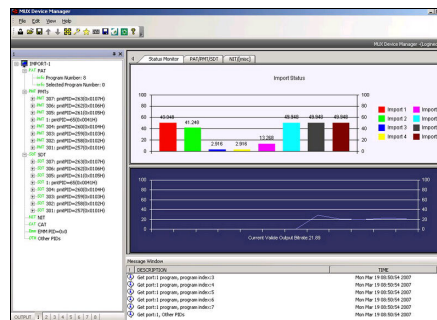
## Overview

Transport streams are packetized program streams. Multi Program Transport Streams (MPTS) are multiplexes of single transport streams. Multi Program Transport Streams are used to distribute the many streams that provide us many choices for content that is streamed around via cable systems, satellite networks and terrestrial broadcasters.

Transport stream multiplexers are designed to assemble multiprogram transport streams by analyzing incoming TS's, combining transport streams, reworking the table structure, and retiming the new stream. Multiprogram transport streams create efficiencies, since RF systems can carry more than one stream at a time.

The **T-Mux™/8** multiplexer is a simple to use, compact, and cost-effective transport stream re-multiplexer and stream processor with ASI inputs. It can multiplex up to eight single or multiple program transport streams (SPTS or MPTS) and regenerate PSI and SI tables. The combination of powerful TS processing capability, a comprehensive feature set, and local or remote configuration makes it an ideal choice for a wide range of DTV systems for service providers.

## MAIN GUI



**DVEO**  
Broadcast Division

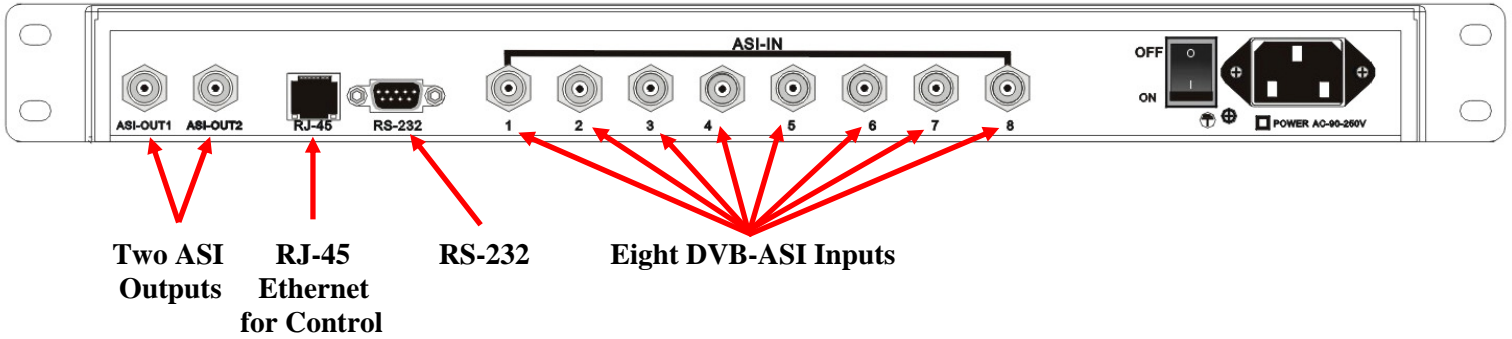
Computer Modules, Inc.  
11409 West Bernardo Court  
San Diego, CA 92127

Tel: (858) 613-1818 Fax: (858) 613-1815

[www.dveo.com](http://www.dveo.com)

# T-Mux™/8

## Rear View



Two ASI Outputs    RJ-45 Ethernet for Control    RS-232    Eight DVB-ASI Inputs

## Specifications

### Inputs

Inputs:	Eight DVB-ASI inputs
Connectors:	F-type, 75 ohm and BNC 75 ohm
CI Slots:	F-type LNB RF loop-through output
Packet Length:	188 or 204
Input Bit Rate:	1.5 to 100 Mbps
Maximum PIDs Per Input:	255
Maximum PMTs Per Input:	60

### Outputs

Outputs:	Two mirrored DVB-ASI outputs
Connectors:	BNC 75 ohm
Loop-through:	F-type LNB RF loop-through output
Audio:	Balanced Audio (XLR) output SDI Output – Digital audio embedded
Packet Length:	188 or 204
Output Bit Rate:	5 to 80 Mbps
Maximum PIDs Per Output:	255
Maximum PMTs Per Output:	45

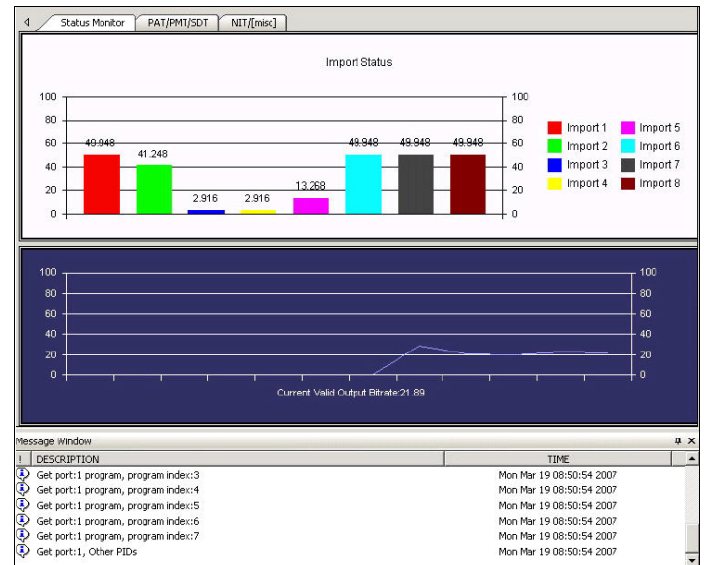
### Control & Monitoring

Local:	Front panel operation, LCD display, RS-232
Remote:	SNMP remote control for integration in centralized management software

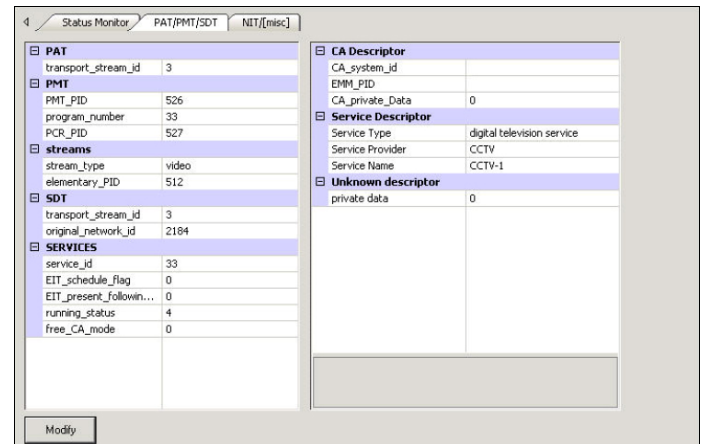
### Physical & Power

Input Voltage:	AC 100V ~ 250V, 50/60 Hz
Power Consumption:	20W (maximum)
Dimensions:	1 RU 19 inch rack 17" (W) x 13" (D) x 1.7" (H) 430 (W) mm x 335 mm (D) x 44 mm
Weight:	8.82 lbs. (4 Kg.)
Conformities:	CE, RoHS

## Sample GUIs



Multiplier Status Monitor



PAT/PMT Setup

## Ordering Info

T-Mux/8

© 2012 Computer Modules, Inc. DVEO and T-Mux are trademarks of Computer Modules, Inc. All other trademarks and registered trademarks are the properties of their respective owners. All rights reserved. Specifications are subject to change without notice.



Computer Modules, Inc.

11409 West Bernardo Court

San Diego, CA 92127

Tel: (858) 613-1818 Fax: (858) 613-1815

[www.dveo.com](http://www.dveo.com)