

TVB593 DVB-S+S2

DVB-S and DVB-S2 with L Band Out Transport Stream Modulator with DVB-ASI or PCIe Bus Input. Frequency Agile, Field Upgradeable with Other Modes. (With Sophisticated User Interface with Scheduling). RF Output. For Digital Signage, STB Testing, and Laboratory Applications. This Device Feeds Either an Antenna or Coax Cable.

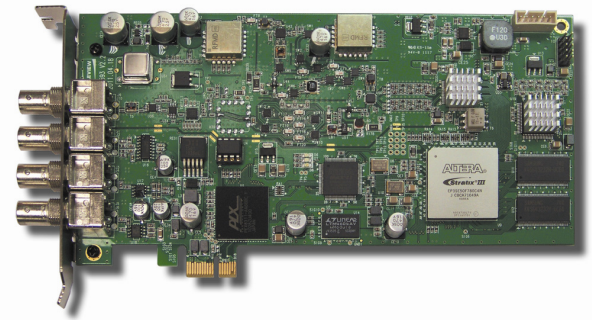
Features

- Transmits real time video or stored video from the server hard drive and sends it to multiple HD monitors simultaneously
- Input: IP, DVB-ASI or SMPTE 310M transport streams via PCIe bus or BNC bracket connector
- Output: DVB-S or DVB-S2
- Includes ASI port for simultaneous ASI and RF output if TS is pulled from hard drive
- Frequency agile
- On board channel selectable RF output up-converter
- L band out (1036-1700 MHz) with Punctured Trellis Coding: Select: (1/2, 2/3, 3/4, 5/6, 7/8)
- ECC: Reed Solomon (204, 188, T=8) encoding
- ETS 302 307 standard compliant
- 956-1750 MHz
- QPSK, 8PSK, 16APSK, 32APSK
- Programmable RF output level (0.1 dB step)
- Can superposition white noise over modulated signal and control the output C/N ratio
- Feeds either an antenna or coax cable
- Field upgradeable – can be reprogrammed to add other profiles
- Supplied with Windows® based Transport Stream Player application with Scheduler
- Playout Scheduler – schedule tasks (5 maximum) to run daily, weekly or monthly at a certain time
- Includes transport stream analyzer
- Freq Config GUI supported via Windows® 2000, Windows XP, Windows 7, Vista 32 bit, and Linux®
- Customer oriented API is also available
- Sample transport streams available
- 0dBm amplifier included

Applications

- In Store Demos of plasma televisions
- Public space digital billboards
- Test Equipment for RF demodulators
- Hotel and Lodging video systems

RF Output
TS Input
DVB-ASI Output
SMPTE 310
Output



PCIe Version

DVB-S
SATELLITE

DVB-S2

Overview

RF modulators convert a video signal to RF (radio frequency) so the video can be transmitted to a television via its RF input.

DVB-S and DVB-S2 are the digital broadcast standards used for satellite broadcasting worldwide. DVB-S2 is the second generation of DVB-S, with enhanced modulation up to 32APSK.

Our **TVB593 DVB-S+S2** modulator PCIe card transmits real time video or stored video from the server hard drive and sends it to multiple HD monitors simultaneously, using RF as a carrier. The TVB593 DVB-S+S2 can connect via an antenna or coaxial cable, and features RF output.

It is suitable for set top box testing, satellite receiver testing, laboratory applications, digital signage, and video feeds in public areas such as hotels and trade shows.

This card is *field upgradeable* – you can purchase licenses for a wide variety of additional modulator profiles and upgrade the card immediately. Modulator profiles typically used in North America include QAM, ATSC M/H, and 8VSB. Modulator profiles typically used in Europe are DVB-T, DVB-T2, DVB-H, DVB-C2, DVB-S, and DVB-S2. Modulator profiles typically used in Asia are ISDB-T, ISDB-S, DTMB, CMMB, and T-DMB.

DVEO
Broadcast Division

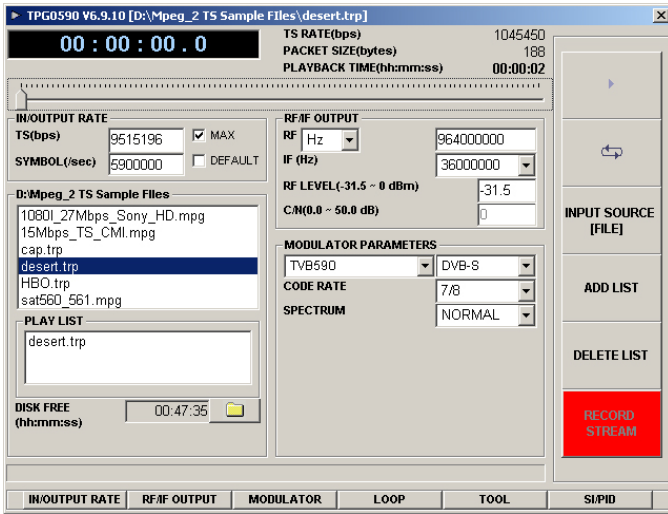
Computer Modules, Inc.

11409 West Bernardo Court

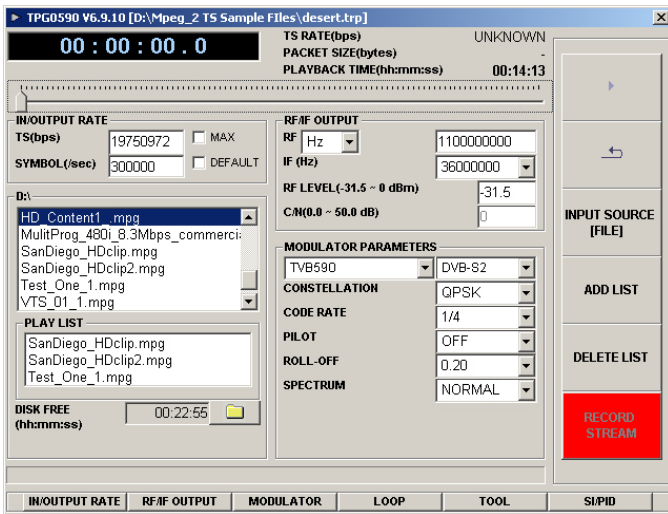
San Diego, CA 92127

Tel: (858) 613-1818 Fax: (858) 613-1815

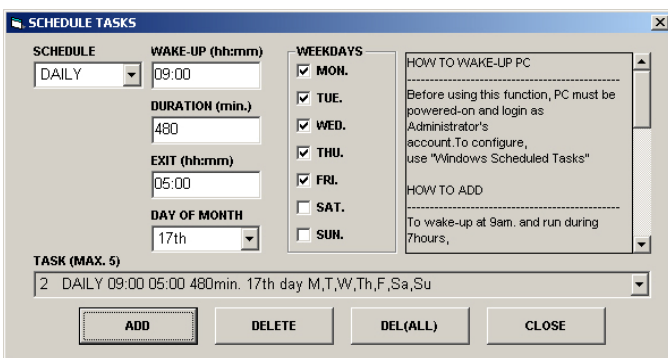
www.dveo.com



Main GUI – DVB-S (QPSK)



Main GUI – DVB-S2



Playout Scheduler

Transport Stream Input	From Hard Disk through PCIe, or via BNC DVB-ASI connector
Bit Rate	Up to 90 Mbps
ASI/SMPTE 310M Input/Output	Connector: 75 ohm BNC
RF Output	Connector: 75 ohm BNC Freq: VHF/UHF 55~867 MHz L-BAND 956~2036 MHz Level: VHF/UHF -31.5 to 0 dBm L-BAND -25 dBm max
PCIe Bus	PCI express x1 compliant
Dimensions	HxWxL: 25 mm x 107 mm x 210 mm (.98 x 4.21 x 8.27 inches)
Drivers	Windows® 7 (32/64 bit), XP (32/64 bit), 2000, Vista (32/64 bit), WDM, and Linux®
Operating Conditions	Temperature: 0~45° C (32 to 113 ° F) Humidity: 0~85%
Conformities	FCC, UL, RoHS, CE Mark

DVB-S (QPSK) Specifications

Standard	ETSI EN 300421 (DVB-S) compliant
Code Rates	1/2, 2/3, 3/4, 5/6, 7/8
Symbol Rates	1~45M symbols/s
DC Blocking Voltage	50V max

DVB-S2 Specifications

Standard	ETS 302 307 compliant
LDPC Code	1/4, 1/3, 2/5, 1/2, 3/5, 2/3, 3/4, 4/5, 5/6, 8/9, and 9/10
Modulation Modes	QPSK, 8PSK, 16APSK, 32APSK
Baseband Shaping Filter	Roll-off 0.20, 0.25, 0.35, Selectable
Symbol Rate	1~45 M symbols/s
DC Blocking Voltage	50V max

Ordering Info

TVB593 DVB-S+S2

© 2012 Computer Modules, Inc. DVEO and Computer Modules are trademarks of Computer Modules, Inc. All other trademarks and registered trademarks are the properties of their respective owners. All rights reserved. Specifications are subject to change without notice.



Computer Modules, Inc.
11409 West Bernardo Court
San Diego, CA 92127

Tel: (858) 613-1818 Fax: (858) 613-1815

www.dveo.com