

TVB593 ISDB-T

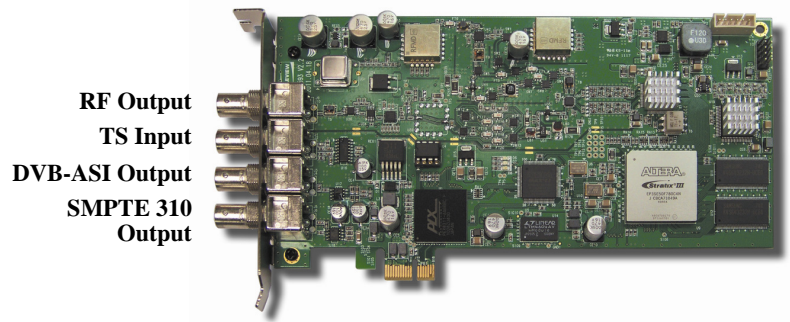
ISDB-T Transport Stream Modulator with DVB-ASI or PCIe Bus Input and Sophisticated User Interface with Scheduling. Frequency Agile, ARIB Compliant, Field Upgradeable with Other Modes. RF Output. For Digital Signage, STB Testing, and Laboratory Applications. This Device Feeds Either an Antenna or Coax Cable.

Features

- Transmits real time video or stored video from the server hard drive and sends it to multiple HD monitors simultaneously
- Input: IP, DVB-ASI or SMPTE 310M transport streams via PCIe bus or BNC bracket connector
- Output: ISDB-T
- DVB-ASI output for monitoring
- Includes ASI port for simultaneous ASI and RF output if TS is pulled from hard drive
- Frequency agile
- ARIB STD-B31 v1.6 compliant
- 54 MHz and up complete VHF/UHF RF out
- On board channel selectable RF output up-converter
- Programmable RF output level (0.1 dB step)
- Can superposition white noise over modulated signal and control the output C/N ratio
- Feeds either an antenna or coax cable
- Field upgradeable – can be reprogrammed to add other profiles
- Supplied with Windows® based Transport Stream Player application with Scheduler
- Payout Scheduler – schedule tasks (5 maximum) to run daily, weekly or monthly at a certain time
- Includes transport stream analyzer
- Freq Config GUI supported via Windows® 2000, Windows XP, Windows 7, Vista 32 bit, and Linux®
- Customer oriented API is also available
- Sample transport streams available
- 0dBm amplifier included

Applications

- Engineering labs
- In Store Demos of ISDB-T receivers
- Digital Signage
- Test Equipment for RF demodulators
- Hotel and Lodging video systems



PCIe Version

Overview

RF modulators convert a video signal to RF (radio frequency) so the video can be transmitted to a television via its RF input.

ISDB-T (Integrated Services Digital Broadcast – Terrestrial) is the digital broadcasting standard used in Japan and Brazil for mobile and regular terrestrial digital TV.

Our ARIB standard compatible **TVB593 ISDB-T** modulator PCIe card transmits real time video or stored video from the server hard drive and sends it to multiple HD monitors simultaneously, using RF as a carrier. The TVB593 ISDB-T can connect via an antenna or coaxial cable, and features RF output.

It is suitable for set top box testing, ISDB-T receiver testing, laboratory applications, digital signage, and video feeds in public areas such as hotels and trade shows.

This card is *field upgradeable* – you can purchase licenses for a wide variety of additional modulator profiles and upgrade the card immediately. Modulator profiles typically used in North America include QAM, ATSC M/H, and 8VSB. Modulator profiles typically used in Europe are DVB-T, DVB-T2, DVB-H, DVB-C2, DVB-S, and DVB-S2. Modulator profiles typically used in Asia are ISDB-T, ISDB-S, DTMB, CMMB, and T-DMB.

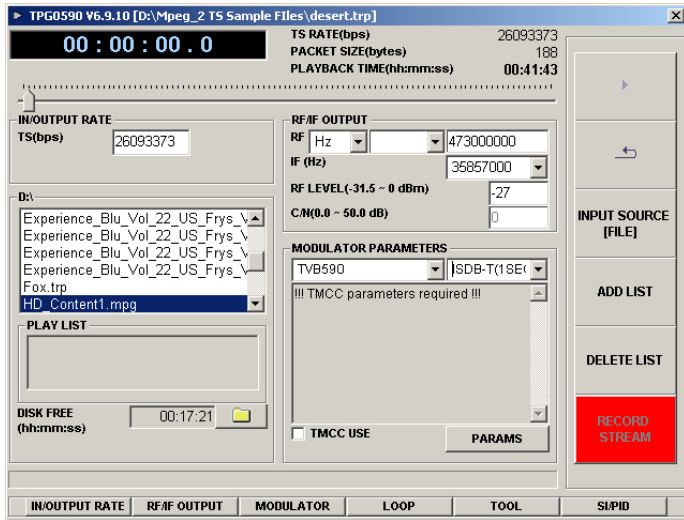


Computer Modules, Inc.

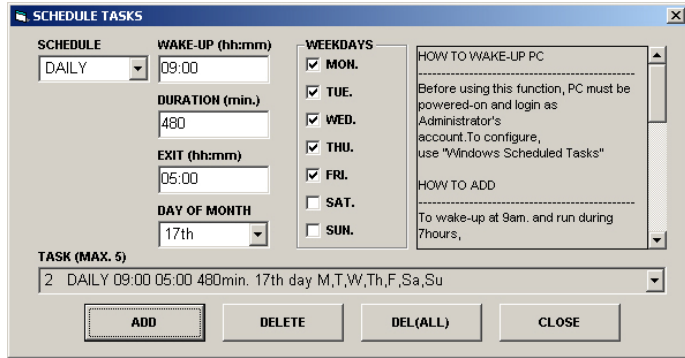
11409 West Bernardo Court
San Diego, CA 92127

Tel: (858) 613-1818 Fax: (858) 613-1815

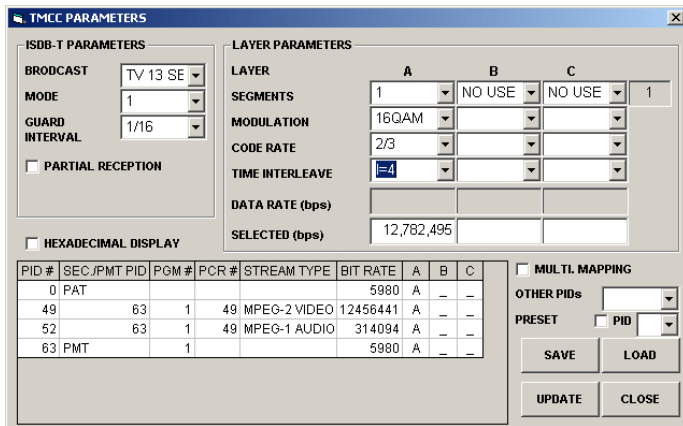
www.dveo.com



Main GUI



Playout Scheduler



TMCC Parameters

Transport Stream Input	From Hard Disk through PCIe, or via BNC DVB-ASI connector
Bit Rate	Up to 90 Mbps
ASI/SMPTE 310M Input/Output	Connector: 75 ohm BNC
RF output	Connector: 75 ohm BNC Freq: VHF/UHF 55~867 MHz L-BAND 956~2036 MHz Level: VHF/UHF -31.5 to 0 dBm L-BAND -25dBm max
PCIe Bus	PCI express x1 compliant
Dimensions	HxWxL: 25 mm x 107 mm x 210 mm (.98 x 4.21 x 8.27 inches)
Drivers	Windows® 7 (32/64 bit), XP (32/64 bit), 2000, Vista (32/64 bit), WDM, and Linux®
Operating Conditions	Temperature: 0~45° C (32 to 113° F) Humidity: 0~85%

ISDB-T Specifications

Standard	ARIB STD-B31 v1.6 compliant
Mode	Mode I, Mode II, Mode III
Code Rates	1/2, 2/3, 3/4, 5/6, 7/8 selectable
Mapping	DQPSK, QPSK, 16QAM, 64QAM
Guard Interval	1/4, 1/8, 1/16, 1/32
Timing	Mode I - 0, 4, 8, 16
Interleaving	Mode II - 0, 2, 4, 8
Length	Mode III - 0, 1, 2, 4
Number of Segments	1 / 13 Segment
Support TMCC Info Generation (ISDB-T info and IIP)	*ISDB-T direct modulation from DVB-ASI input is supported
MER	~ 33dB (Measured with Anritsu MS2721 ISDB-T Analyzer)
Spectral Purity	>50dB (at VHF/UHF), i.e. Spurious levels are lower by 50 dB than modulated signal

Ordering Info

TVB593 ISDB-T

© 2012 Computer Modules, Inc. DVEO and Computer Modules are trademarks of Computer Modules, Inc. All other trademarks and registered trademarks are the properties of their respective owners. All rights reserved. Specifications are subject to change without notice.



Computer Modules, Inc.

11409 West Bernardo Court

San Diego, CA 92127

Tel: (858) 613-1818 Fax: (858) 613-1815

www.dveo.com