

# TVB593 T-DMB

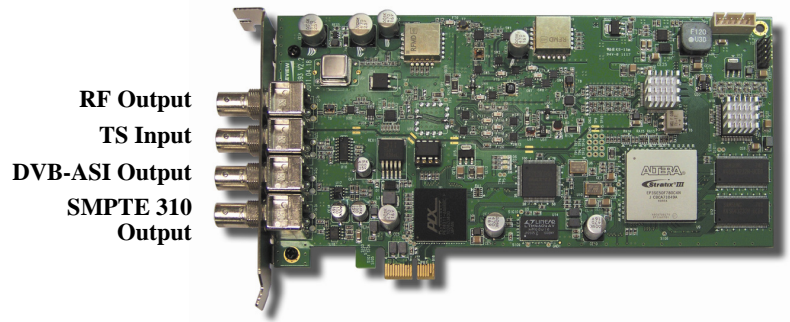
**MultiMode VHF/UHF/L Band T-DMB (Korea) Transport Stream Modulator with DVB-ASI Input and Sophisticated User Interface with Scheduling. Frequency Agile, Field Upgradeable with Other Modes. Transport Stream Input via PCIe Bus or from BNC Connector on the Bracket. RF Output. For Digital Signage, STB Testing, and Laboratory Applications. This Device Feeds Either an Antenna or Coax Cable.**

## Features

- Transmits real time video or stored video from the server hard drive and sends it to multiple HD monitors simultaneously
- Input: IP, DVB-ASI or SMPTE 310M transport streams via PCIe bus or BNC bracket connector
- Output: T-DMB
- Includes ASI port for simultaneous ASI and RF output if TS is pulled from hard drive
- Frequency agile
- Compatible with ETSI 300401, and ETSI 300799
- RF Output Frequency: 174-230 MHz, 470-854 MHz
- Programmable RF output level (0.1 dB step)
- Can superposition white noise over modulated signal and control the output C/N ratio
- Feeds either an antenna or coax cable
- Field upgradeable – can be reprogrammed to add other profiles
- Supplied with Windows® based Transport Stream Player application with Scheduler
- Playout Scheduler – schedule tasks (5 maximum) to run daily, weekly or monthly at a certain time
- Includes transport stream analyzer
- Freq Config GUI supported via Windows® 2000, Windows XP, Windows 7, Vista 32 bit, and Linux®
- Customer oriented API is also available
- Sample transport streams available
- 0dBm amplifier included

## Applications

- Engineering labs
- In Store Demos of T-DMB receivers
- Digital Signage
- Test Equipment for RF demodulators
- Hotel and Lodging video systems



RF Output  
TS Input  
DVB-ASI Output  
SMPTE 310  
Output

PCIe Version

## Overview

RF modulators convert a video signal to RF (radio frequency) so the video can be transmitted to a television via its RF input.

T-DMB (Terrestrial Digital Multimedia Broadcasting) is the digital broadcasting standard used in South Korea for regular terrestrial digital TV and mobile TV.

Our **TVB593 T-DMB** modulator PCIe card transmits real time video or stored video from the server hard drive and sends it to multiple HD monitors simultaneously, using RF as a carrier. The TVB593 T-DMB can connect via an antenna or coaxial cable, and features RF output.

It is suitable for set top box testing, T-DMB receiver testing, laboratory applications, digital signage, and video feeds in public areas such as hotels and trade shows.

This card is *field upgradeable* – you can purchase licenses for a wide variety of additional modulator profiles and upgrade the card immediately. Modulator profiles typically used in North America include QAM, ATSC M/H, and 8VSB. Modulator profiles typically used in Europe are DVB-T, DVB-T2, DVB-H, DVB-C2, DVB-S, and DVB-S2. Modulator profiles typically used in Asia are ISDB-T, ISDB-S, DTMB, CMMB, and T-DMB.

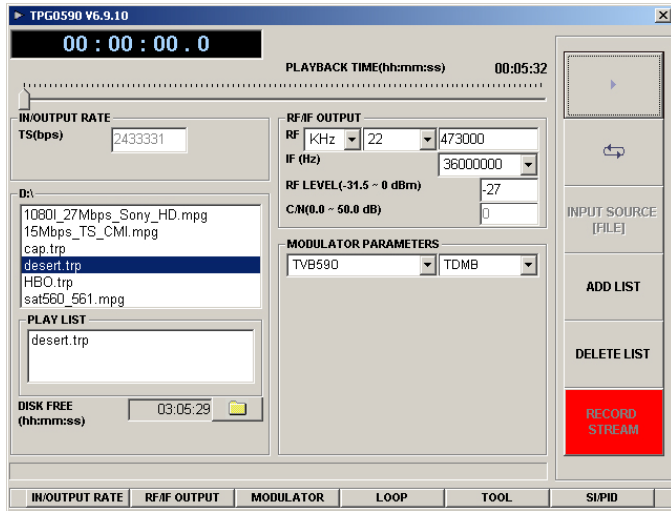


Computer Modules, Inc.

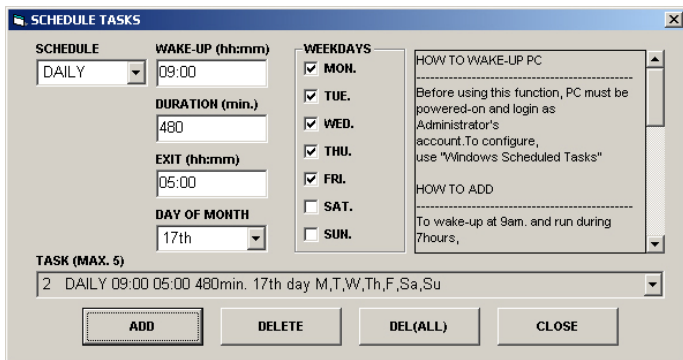
11409 West Bernardo Court  
San Diego, CA 92127

Tel: (858) 613-1818 Fax: (858) 613-1815

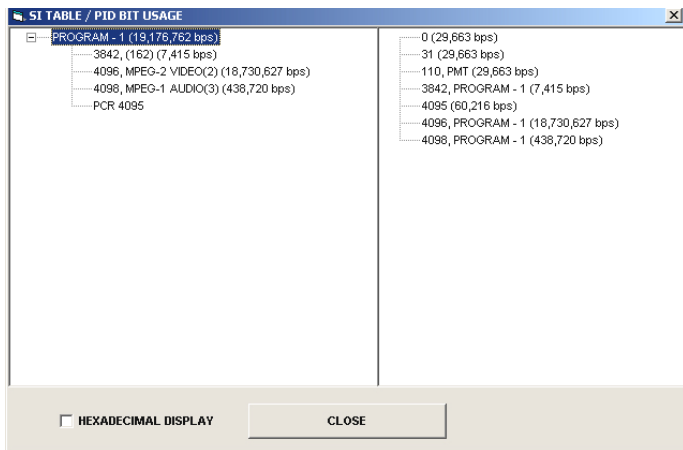
[www.dveo.com](http://www.dveo.com)



**Main GUI**



**Playout Scheduler**



**SI Table**

## Ordering Info

### TVB593 T-DMB

© 2012 Computer Modules, Inc. DVEO and Computer Modules are trademarks of Computer Modules, Inc. All other trademarks and registered trademarks are the properties of their respective owners. All rights reserved. Specifications are subject to change without notice.

## Board Specifications

Transport Stream Input	From Hard Disk through PCIe, or via BNC DVB-ASI connector
Bit Rate	Up to 90 Mbps
ASI/SMPTE 310M Input/Output	Connector: 75 ohm BNC
RF output	Connector: 75 ohm BNC Freq: VHF/UHF 55~867 MHz L-BAND 956~2036 MHz Level: VHF/UHF -31.5 to 0 dBm L-BAND -25 dBm max Freq accuracy: +/-5 KHz max Attenuation step: 0.1dB Phase noise <-90dBc/Hz @ 10 KHz RF step size – T-DMB: 8 KHz step
PCIe Bus	PCI express x1 compliant
Dimensions	HxWxL: 25mm x 107mm x 210mm
Drivers	Windows® 7 (32/64 bit), XP (32/64 bit), 2000, Vista (32/64 bit), WDM, and Linux®
Conformities	FCC, UL, RoHS, CE Mark

## T-DMB Specifications

Standard	Compliant with ETS 300401 and ETS 300799
Transmission modes	DAB transmission modes I, II, III, IV Mode automatically selected from the ETI stream  Supports ETI (NI, G.703), ETI (NA, G.704) 5592 and ETI (NA, G.704) 5376 file formats
Modulation	*T-DMB modulation from TS input is not supported



**Computer Modules, Inc.**

**11409 West Bernardo Court**

**San Diego, CA 92127**

**Tel: (858) 613-1818 Fax: (858) 613-1815**

[www.dveo.com](http://www.dveo.com)