

# TLV400E-8VSB™

**Broadcast Quality Frequency Agile High Definition 8/16 VSB Receiver Demodulator with MPEG-2 HD/SD Decoder (2.5-45 Mbps). Decodes DVB-ASI, IP, or SMPTE 310M and Demodulates 8VSB RF and Converts it to SDI, HD-SDI, RGB, IP, YPrPb, or Composite Output. Transport Streams Play Out in HD or SD Format. Optional Secondary SD Decoder with Composite Output Only. Dolby AC-3 and MPEG Audio Decode with XLR Connectors. Cost Effective MPEG-2 Decoder/Receiver. Additional Features Include WEB BROWSER interface.**



## Features

- Inputs: 8/16 VSB, DVB-ASI, IP, SMPTE 310M with automatic switchover from 8VSB to ASI or IP in
- Optional second RF input port
- Supports SMPTE 2022 FEC on IP input
- Outputs: ASI, SMPTE 310M, SDI or HD-SDI, Analog Component (YPbPr or RGB), Composite (NTSC or PAL), or IP (up to 4 IP transport streams out, SPTS or MPTS)
- Decodes and displays closed captioning (EIA 608 or EIA 708)
- Auto failover from IP to 8VSB
- MPEG-2 MP@HL compliant video decoder supplies either digital or analog video outputs
- Digital video signal compliant with SMPTE-259M/ SMPTE-292M (SDI) with embedded 2 channel audio (SMPTE-299M)
- Dolby Digital® AC-3, HE-AAC, and MPEG-1/2 5.1 channel audio decoder. SAP is option.
- Dolby Digital® AC-3 or PCM stereo audio selectable over BNC connector
- Dolby Pro Logic compatible stereo audio output on one XLR connector and one D-sub 9P connector
- RGB video signal with 1080i/720p/480p/480i video mode
- Also functions as ASI to SMPTE 310M converter
- 2 lines by 40 characters LCD display
- Down converts HD input to SD out for monitoring
- Front panel controls for fast setup
- Firmware upgradeable via internet or USB
- SNMP (10/100/1000 Base T Ethernet) management
- Easy-to-use Web-based GUI
- PSIP display – PAT, PMT, MGT, VCT, EIT, STT
- Also supports H.264 for future proofing
- Now supports AFD

## Applications

- Off air 8VSB receiver
- MPEG-2 HD or SD Decoder
- Upgrade from TLV300E-8VSB
- Content repurposing

## Overview

The versatile all purpose **TLV400E-8VSB** Professional new generation frequency agile receiver demodulates all on-air terrestrial 8VSB frequencies and supplies crystal clear digital or analog video from all formats used by Broadcast Professionals in USA, Canada, Mexico, and Korea. It not only functions as a broadcast demodulator but also doubles as a high-end professional MPEG-2 decoder. It features an easy-to-use GUI, plus front panel controls. Both allow you to change settings quickly.

The output of the demodulator is available on either DVB-ASI or SMPTE 310M connectors. The output of the decoder is HD-SDI, SDI, YPrPb, RGB, IP, or composite. With its built-in MPEG-2 decoder it is able to decode transport streams up to 45 mbps. Designed to support all the industry standard forms of the ATSC standard, it supports 480i, 480p, 720p and 1080i decoding. Audio support is via embedded audio or via L/R 5 channel XLR connectors.

Audio support includes analog stereo audio output (L, R) on XLR's. For Dolby Pro Logic audio output there is a front panel control to enable Pro Logic surround sound audio on the two XLR's. For users looking for digital audio via PCM or compressed audio, the output TS is via the BNC connectors. The outputs are enabled via the MAIN/AUDIO/DIGITAL LCD menu. The compressed audio on the BNC has a Dolby AC-3 with 5.1 channels.

A notable feature is the unit's ability to change automatically between RF, ASI, and IP inputs. It also features auto failover from IP to 8VSB in.

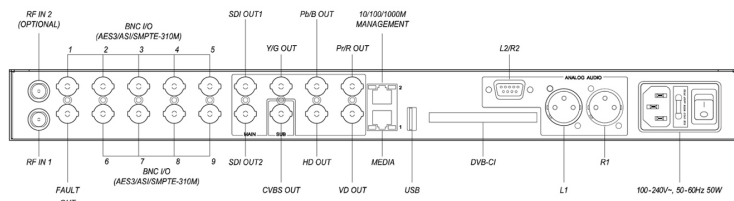
The GUI has evolved over the years to be highly intuitive. Most engineers like it. It operates locally or remotely.



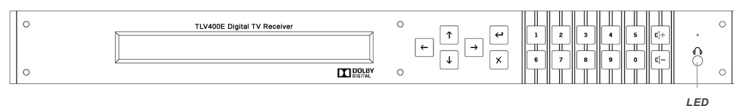
**Computer Modules, Inc.**  
11409 West Bernardo Court  
San Diego, CA 92127  
Tel: (858) 613-1818 Fax: (858) 613-1815

[www.dveo.com](http://www.dveo.com)

## Rear View



## Front Panel View



## Specifications

<b>Front Display/Keys</b>	<ul style="list-style-type: none"> <li>2 lines by 40 characters LCD</li> <li>18 keys for Easy Control</li> <li>LOCK, ENTER, EXIT, ARROW, and Numeric Keys</li> <li>LED (3 colors: Green, Amber, Red)</li> </ul>
<b>8VSB RF Input</b>	<ul style="list-style-type: none"> <li>Channel: 54-864 MHz RF Selectable</li> <li>Connector: 2 x 75 Ohm BNC-type Connector</li> <li>Sensitivity: <ul style="list-style-type: none"> <li>&gt; 43.5 dBμ V (UHF)</li> <li>&gt; 35.4 dBμ V (VHF HIGH)</li> <li>&gt; 35.4 dBμ V (VHF LOW)</li> </ul> </li> </ul>
<b>Optional Second RF Input</b>	8VSB or QAM
<b>TS Input</b>	<ul style="list-style-type: none"> <li>Format: SMPTE 310M, IP (UDP/RTP, SMPTE 2022), or DVB-ASI (Select ASI or 310M at front panel)</li> <li>Connectors: 75 ohm BNC, RJ-45</li> </ul>
<b>Audio Output</b>	<ul style="list-style-type: none"> <li>Signal: AES3-id (Select ASI or 310M or AES3-id output at front panel)</li> <li>Connector: 75 ohm BNC</li> <li>Format: Dolby AC-3 audio with 5.1, AAC, MPEG 1/2, PCM</li> <li>1st Audio Output: Connector: XLR connector (AES 3-id)</li> <li>Optional 2nd Audio Output (SAP): Connector: D-sub 9p connector</li> </ul>
<b>Audio Levels:</b>	Set to +4dBm for -20dBFS digital audio contents when the audio attenuation menu is set to zero. The audio level can be attenuated using the front panel audio configuration menu.
<b>Digital Audio Output</b>	<ul style="list-style-type: none"> <li>Choose either PCM mode or COMPRESSED audio output mode for MAIN channel. The chosen audio mode is used for all BNC output ports. You can have PCM mode only for the SUB channel.</li> <li>You may have COMPRESSED audio out of MAIN channel over BNC port and PCM audio out of SUB channel over BNC port.</li> </ul>
<b>Amplifier/Speakers</b>	One 10W amplifier and speaker for L+R channel

## Ordering Info

TLV400E-8VSB  
 TLV400E-8VSB/2RF – with optional second RF input port  
 TLV400E-8VSB/+SAP – with optional SAP

© 2019 Computer Modules, Inc. DVEO, TLV300E-8VSB, and TLV400E-8VSB are trademarks of Computer Modules, Inc. All other trademarks and registered trademarks are the properties of their respective owners. All rights reserved. Specifications are subject to change without notice.

## Supported SDI Modes

The TLV400E-8VSB has decoded PCM audio embedded. Supported modes of SDI are:

Video Mode	Frame Rate			Embedded Audio	
	29.97 Hz (59.94)	30 Hz (60)	25 Hz (50)	PCM	Compressed
1080i	Supported	Supported	Supported	Supported	Supported
720p	Supported	Supported	Supported	Supported	Supported
480p/576p	Not defined (480p)	Not defined (480p)	Not defined (576p)	Not Available	Not Available
480i/576i	Supported for 480i	Not supported (480i)	Supported (576i)	Supported	Supported

The SDI has EIA-608 and EIA-708 closed caption (=DTVCC) embedded. It also has line 21 closed caption on 480i mode.

<b>TS Output</b>	<ul style="list-style-type: none"> <li>Format: SMPTE 310M, DVB-ASI, or IP (up to 4 IP TS out, SPTS or MPTS – does not alter the source program)</li> <li>Connectors: 75 ohm BNC, RJ-45</li> </ul>
<b>Component Video Output</b>	<ul style="list-style-type: none"> <li>Formats: 1080i/720p/576p/480p/576i/480i</li> <li>Connectors: BNC connector, YPbPr/RGB Selectable</li> </ul>
<b>Preview Out (Composite)</b>	<ul style="list-style-type: none"> <li>Signal: NTSC/PAL – Supports RF mode of analog PAL – PAL B/G/I/D/M/N (for PAL, set frame rate to 25/50 Hz mode)</li> <li>Connector: 75 ohm BNC</li> </ul>
<b>Digital Video Output (SDI, HD-SDI)</b>	SMPTE-259M/SMPTE-292M with embedded audio (SMPTE-299M), with screen formatting including AFD
<b>Ethernet Output</b>	10/100/1000 Mbps MPEG over RTP/UDP
<b>USB 2 for Software Updates</b>	Connector: Type “A” Ethernet adapter available
<b>Fault</b>	Relay contact on signal loss
<b>Conditional Access</b>	BISS-1/E and DVB-CI
<b>Network Management</b>	NMS supported through SNMP
<b>CPU and RAM</b>	MIPS 300 MHz 32 bit RISC
<b>Unit</b>	1 RU 19-inch rackmountable
<b>Operating Temperature</b>	+0 ~ +45°C (32 to 113°F)
<b>Storage Temperature</b>	-20 ~ +50°C (-4 to 122°F)
<b>Operating Humidity</b>	10 to 90%, non-condensing
<b>Power Supply</b>	AC 100-240V ~ 50-60 Hz 50W Max
<b>Dimensions</b>	HxWxL: 1.7 x 19 x 13.6 inches (4.3 x 48.26 x 34.55 cm)
<b>Weight</b>	10 lbs. (4.54 kg)
<b>Conformities</b>	<ul style="list-style-type: none"> <li>FCC, RoHS</li> <li>CE Mark: Electromagnetic Compatibility Directive 2004/108/EC</li> <li>Low Voltage Directive 2006/95/EC</li> </ul>



**Computer Modules, Inc.**  
 11409 West Bernardo Court  
 San Diego, CA 92127  
 Tel: (858) 613-1818 Fax: (858) 613-1815  
[www.dveo.com](http://www.dveo.com)