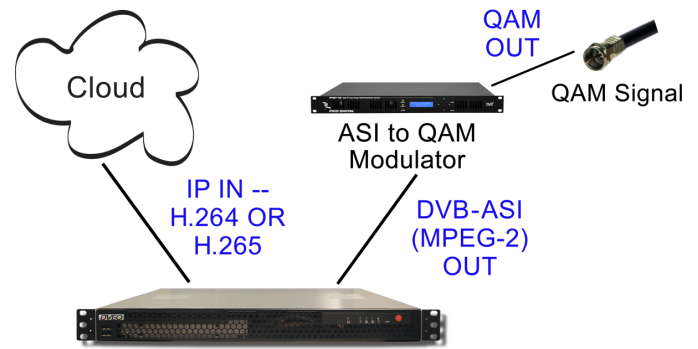


D-Streamer™ IP/ASI

Real Time, 1 RU, Quick Starting, Embedded Linux® Based, Remotely Manageable, SD or HD, H.264/AVC or H.265/HEVC Video and Audio IP to ASI Converter with Transcoder for Receiving Live MPEG-2, H.264, or H.265 Streams with Most Any TS Protocol IP Input. Supports HLS, HTTP, RTSP, HTML, or RTMP (Pushed from Flash Server) In and Converts the H.264 AVC or H.265 to MPEG-2 Compressed Digital Video and Audio. Incoming Audio Support for AAC or MPEG-1 Layer II. Output Audio is MPEG Audio or Optional Dolby®. Transcodes at .1 to 15 Mbps. Ideal Decoder for Receiving and Decoding of Streaming Video from Remote Sites, Content Delivery Networks (CDNs), or IPTV Compatible Appliances or Players. Tested to Work Over Public Internet, WiFi and Other RF Backbones.



Features

- Supports both HD and SD H.265/HEVC, H.264/MPEG-4 AVC, or MPEG-2 decoding
- Input: Bursty or smooth IP
- Output: MPEG-2 over ASI and/or IP
- Security scanned for vulnerabilities
- IP Input protocols: HTTP Live (HLS), UDP, RTP, RTSP, HTTP, RTMP (pushed from Flash server)
- Supports input and output resolutions of 1080i, 1080p, 720p, 480i, 480p, CIF, QCIF, and qHD
- Audio Input: AAC, MPEG-1 Layer II, optional MP3, or optional "SurCode for Dolby Digital" AC-3
- Audio Output: MPEG-1 Layer II or optional Dolby® AC-3
- Remote GUI includes some scheduling
- Can be used to store or time-delay incoming stream with optional storage add-on
- SNMP, REST, SOAP support for remote management and monitoring
- Relies on Intel® Xeon® processor

Applications

- Converting IP streams to DVB-ASI wherever they may come from
- IP Camera Decoder for cable head ends
- H.265 or H.264 to MPEG-2 with ASI for cable head ends
- H.265 or H.264 streaming to Cable Head Ends
- H.265 or H.264 to MPEG-2 transcoder
- Decoding H.264, H.265, MPEG-2

Overview

Streaming video via Flash, HLS, or RTSP has emerged as a very reliable and efficient methodology for delivering SD and HD content over the public internet. It occurred to us that there are not many transcoders that convert incoming "wrapped" streams to MPEG-2 over DVB-ASI. The D-Streamer™ IP/ASI is designed to address this need and deliver a professional d-streaming and decoding device targeted at cable system operators.

The D-Streamer IP/ASI is a real time H.264 transcoder that receives streamed H.264 IP or H.265 transport streams and transcodes them to MPEG-2. It accepts a wide variety of IP protocols, wrappers, and containers but is highly tuned for HLS and RTSP.

The unit is ideal for converting IP streams from anywhere into ASI formats for re-use by broadcasters and cable companies.

This embedded Linux® based unit is designed to be affordable, scalable, and extendable. Modifications to video formats are easily created. Remote management and multi level security is built in.

DVEO's patented "DOZER" technology provides automated UDP Packet Recovery Technology and can be added to the D-Streamer to achieve error-free real-time video delivery to MSO, cable operator, Affiliate, or regional head ends.



Computer Modules, Inc.

11409 West Bernardo Court

San Diego, CA 92127

Tel: 858-613-1818 Fax: 858-613-1815

www.dveo.com

Inputs/Outputs

Standard Version



IP Management Port IP Input DVB-ASI Output

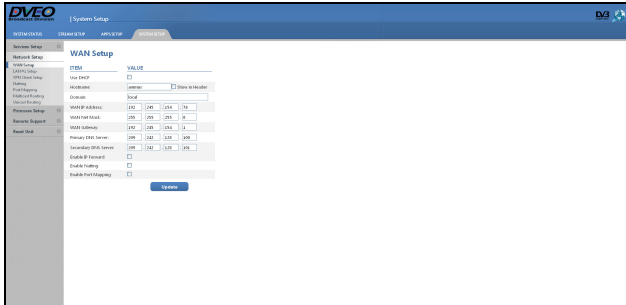
Telco Version

2 each One GigE Ports

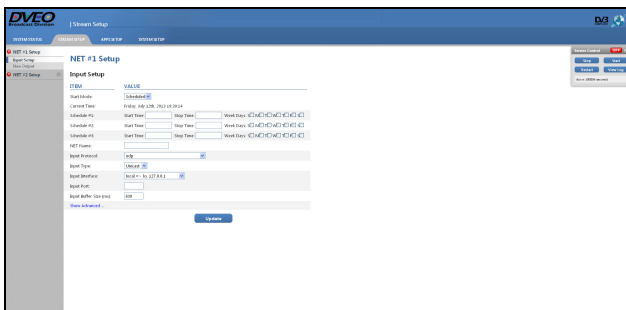


Dual Power Supplies 10 GigE Ports DVB-ASI Output

Sample of GUIs



Network Setup



Scheduled IP Input Setup

Ordering Information

- D-Streamer IP/ASI in 1 RU system
- D-Streamer IP/ASI – RED – As above with dual redundant power supplies
- D-Streamer IP/ASI+DOZER

© 2018 Computer Modules, Inc. DVEO, DOZER, and D-Streamer are trademarks of Computer Modules, Inc. Intel and the Intel logo are trademarks of Intel Corporation in the U.S. and/or other countries. All other trademarks and registered trademarks are the properties of their respective owners. All rights reserved. Specifications are subject to change without notice. AAC licensed via Via Licensing.

Specifications

Supported Resolutions – Input

1920 x 1080	720 x 480	480 x 480	qHD
1280 x 720	704 x 480	480 x 320	
720 x 576	640 x 480	320 x 240	

Note: Supports closed captions.

IP Input

IP Input protocols, “wrappers”:	UDP, RTP, RTSP, HTTP, HTTP Live (HLS), RTMP (pushed from Flash server)
Audio Input:	AAC, MPEG-1 Layer II, optional MP3, and/or optional “SurCode for Dolby Digital” AC-3
Type:	IP multicast, IP unicast
Remote Setup – IMPORTANT:	User may need to assign static IP or provide access to router

DVB-ASI Output

Output:	DVB-ASI, 200 Mbps
Bit rates:	Multiple MPEG-2 video streams at different bit rates (.1 to 15 mbps)
Audio:	MPEG-1 Layer II, Optional AC-3

IP Outputs

Output Formats:	H.264, MPEG-2, or H.265, up to 1080p 30
Output Protocols:	UDP, RTP, RTMP, HTTP, HTTP Live (HLS)
Bit rate:	Up to 400 Mbps IP raw output capability
Ethernet:	Up to 2 x 1 GigE
Type:	IP-multicast, IP-unicast
Video:	NTSC or PAL

Administration

Access:	Web interface, SSH (Secure command line interface)
SNMP:	Monitoring and alerts
Scheduling:	On, Off support for timeslots

CPU and Operating System

CPU:	Intel® Xeon® processor
OS:	DVEO embedded Linux® on SSD

Physical & Power

Size – 1 RU high:	19 x 14.96 x 1.7 inches (W x D x H) 483 x 380 x 43.4 mm (W x D x H)
Voltage:	100-240V, 4-2A, 60-50 Hz, 220 watts
Operating Temperature:	10°C to 35°C
Non-operating Humidity:	20% to 90% non-condensing
Weight:	15 lbs. (6.8 kg)
Conformities:	UL, BSMI, CSA, FCC, CE, RoHS

Security

Ports security scanned to MIL requirements prior to shipment



Computer Modules, Inc.
 11409 West Bernardo Court
 San Diego, CA 92127

Tel: 858-613-1818 Fax: 858-613-1815

www.dveo.com