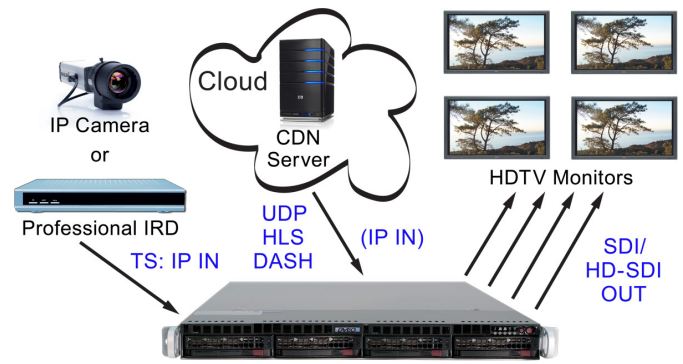


# Streamer™ IP/DIG 1-4ch

Real Time, 2 RU, Quick Starting, Embedded Linux® Based, Remotely Manageable, SD or HD, H.264/AVC or H.265/HEVC Video and Audio Decoder for Receiving 1 to 4 Live Streams with Most Any TS Protocol IP Input. Supports HTTP, RTSP, HTML, or RTMP (Pushed from Flash Server) In and Converts the H.264 AVC, MPEG-2, or H.265 Compressed Digital Video and Audio into Professional Digital SDI or HD-SDI Output, or Optional HDMI Out. Audio Support for AAC or MPEG-1 Layer II. Decodes at .1 to 15 Mbps. Ideal Decoder for Receiving and Professional Decoding of Streaming Video from Remote Sites, Content Delivery Networks (CDNs), or IPTV Compatible Appliances or Players. Tested to Work Over Public Internet, WiFi and Other RF Backbones.



## Features

- Companion receiver for MultiStreamer™ DIG/IP, but tested compatible with third party encoders
- Supports both HD and SD H.265/HEVC, H.264/MPEG-4 AVC, or MPEG-2 decoding
- Input: Bursty or Smooth IP
- Output: One to four channels of SDI and HD-SDI, and/or IP (no transcoding)
- Optional 4 HDMI outputs instead of SDI/HD-SDI outputs
- Security scanned for vulnerabilities
- IP Input protocols: HTTP Live (HLS), UDP, RTP, RTSP, HTTP, RTMP (pushed from Flash server)
- Supports H.264 High Profile @ Level 4.0 (HP@L4)
- Supports MPEG-2 as well
- Supports 1080p30, 1080i, 720p, 480i, 480p, CIF, QCIF, qHD, H.264 up with 29.97 or 59.94 and many others, and custom resolutions
- Supports HDTV output formats SMPTE-274M/SMPTE-296M-2001, ITU-R BT.656
- Color Space: 4:2:0 for H.264, H.265, MPEG-2
- Audio Input: AAC, MPEG-1 Layer II, optional MP3, and/or optional "SurCode for Dolby Digital" AC-3
- Audio Output: Embedded pass-through
- Remote GUI includes some scheduling
- SNMP, REST, SOAP support for remote management and monitoring
- Relies on Intel® Xeon® processor
- Supports Octoshape™ Client on GUI

## Applications

- Streaming video from remote sites from RTMP, RTSP, or HTTP compatible sources such as IP cameras or YouTube®
- Converting IP streams to HD-SDI wherever they may come from
- Feeding Live IP Camera Views into Multiviewers from Jupiter Systems and RGB Spectrum, etc.
- IP Camera Decoder
- Axis IP camera decoder
- Octoshape™ end point
- Broadcast Decoder with Genlock
- Decoding H.264, H.265, MPEG-2

## Overview

Streaming video via Flash, HLS, or RTSP has emerged as a very efficient methodology for delivering SD and HD content over the public internet. It occurred to us that there are not many decoders/receivers that decode incoming "wrapped" streams to HD and SD/SDI. The **D-Streamer IP/DIG 1-4ch** is designed to address this need and deliver a professional quality d-streaming and decoding device for the public internet.

The D-Streamer IP/DIG 1-4ch is a real time H.264, H.265, or MPEG-2 decoder that receives IP transport streams and decodes them to up to four channels of SDI or HD-SDI. It accepts a wide variety of IP protocols, wrappers, and containers but is highly tuned for HLS and RTSP.

The system is ideal for converting IP streams from anywhere into SDI or HD-SDI streams. Broadcasters and content providers can use our MultiStreamer™ DIG/IP to encode SDI or HD-SDI to H.264 IP or H.265, then decode the streams with the D-Streamer IP/DIG 1-4ch. This embedded Linux® based unit is designed to be affordable, scalable, and extendable. Modifications to video formats are easily created. Remote management and multi level security is built in.

DVEO's "DOZER™" provides automated UDP Packet Recovery Technology and can be added to the D-Streamer to achieve error-free real-time video delivery to MSO, cable operator, Affiliate, or regional head ends when paired with a DOZER equipped encoder.



Computer Modules, Inc.

11409 West Bernardo Court

San Diego, CA 92127

Tel: 858-613-1818 Fax: 858-613-1815

[www.dveo.com](http://www.dveo.com)

# Inputs/Outputs

## 4 Channel Telco Version

2 each One GigE Ports



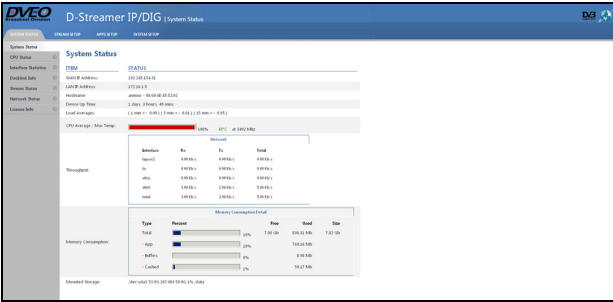
Dual Power Supplies

2 each 10 GigE Ports

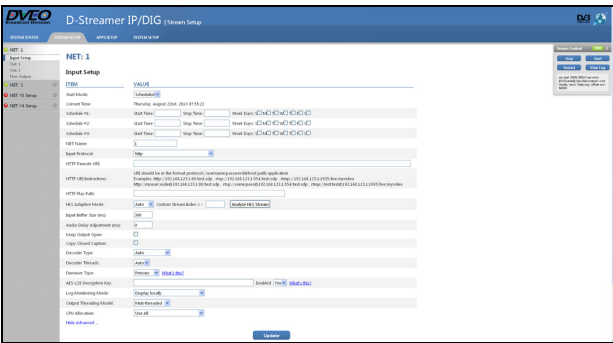
Genlock

SDI/HD-SDI Outputs

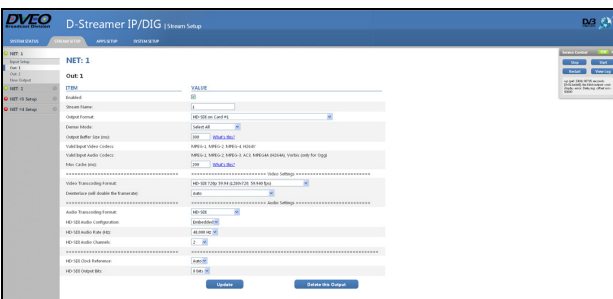
# Sample of GUIs



System Status



Scheduled IP Input Setup



HD-SDI Output Setup

# Ordering Information

- D-Streamer IP/DIG 1-4ch – 1 to 4 SDI/HD-SDI outputs
- D-Streamer IP/HDMI 1-4ch – 1 to 4 HDMI outputs with adapters
- D-Streamer IP/DIG 1-4ch+DOZER

© 2018 Computer Modules, Inc. DVEO, D-Streamer, DOZER, and MultiStreamer are trademarks of Computer Modules, Inc. Intel and the Intel logo are trademarks of Intel Corporation in the U.S. and/or other countries. All other trademarks and registered trademarks are the properties of their respective owners. All rights reserved. Specifications are subject to change without notice. AAC licensed via Via Licensing.

# Specifications

## Supported Resolutions – Input

1920 x 1080	720 x 480	480 x 480	qHD
1280 x 720	704 x 480	480 x 320	H.264up
720 x 576	640 x 480	320 x 240	

Also supports any custom resolution not listed here. Note: Supports closed captions.

## IP Input

Input:	Single Channel Gigabit Ethernet port (RJ45)
Audio Input:	AAC, MPEG-1 Layer II, optional MP3, and/or optional “SurCode for Dolby Digital” AC-3
Input “wrappers”:	HTTP Live (HLS), UDP, RTP, RTSP, HTTP, RTMP (pushed from Flash server), Octoshape™ Optional DOZER patented UDP packet recovery technology
Type:	IP-multicast, IP-unicast
Remote Setup – IMPORTANT:	User may need to assign static IP or provide access to router

## SDI/HD-SDI Output

Video:	Up to 4 SDI or HD-SDI (Blackmagic) outputs, with Genlock
Audio:	Embedded pass-through
Resolutions:	Up to 1080p30

## IP Outputs

Output Formats:	H.264, MPEG-2, or H.265, up to 1080p 30
Output Protocols:	UDP, RTP, RTMP, HTTP, HTTP Live (HLS)
Bit rate:	Up to 400 Mbps IP raw output capability
Ethernet:	Up to 2 x 1 GigE
Type:	IP-multicast, IP-unicast
Video:	NTSC or PAL

## Administration

Access:	Web interface, SSH (Secure command line interface)
SNMP:	Monitoring and alerts
Scheduling:	On, Off support for timeslots

## CPU and Operating System

CPU:	Intel® Xeon® processor
OS:	DVEO embedded Linux® on SSD
Hard Drive:	.5 TB SSD Default

## Network

Network:	2 each 10 Gig, 2 each 1 GB
----------	----------------------------

## Physical & Power

Size (W x D x H):	19 x 20.5 x 1.75 inches (483 x 521 x 44 mm)
Voltage:	00V-240Vac, 47-63Hz, 5-2.5A, 300 watts
Operating Temperature:	0°C ~ 40°C (32°F~ 104°F)
Non-operating Temperature:	-40°C ~ 70°C (-40°F~ 158°F)
Operating Humidity:	20% to 90% RH non-condensing
Non-operating Humidity:	5% to 95% RH non-condensing
Weight:	17 lbs. (7.7 kg)
Redundancies:	Dual power supplies, Port redundancies
Memory:	32 GB DDR3
Conformities:	UL, BSMI, CSA, FCC, CE, RoHS

## Security

Ports security scanned to MIL requirements prior to shipment
--



**Computer Modules, Inc.**  
11409 West Bernardo Court  
San Diego, CA 92127

Tel: 858-613-1818 Fax: 858-613-1815

[www.dveo.com](http://www.dveo.com)