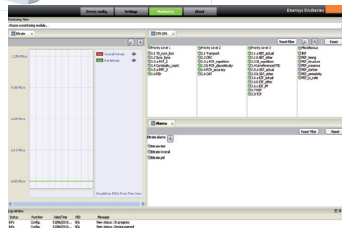


# DiviCatch™

## MPEG2 Stream Analyzer/Recorder



The DiviCatch is a Pocket Analyzer featuring MPEG2 TS real-time analysis and recording.

This product is a compact and cost-effective device, perfect for R&D or Lab applications.

**MPEG2-TS Monitoring:** the 3 priority levels of ETR290 are implemented. Bitrate can be monitored globally and for each service, and customizable alarms are available. The real-time MPEG2-TS source can either be received through USB from the DiviCatch or through the Ethernet port from the PC (IP source).

In addition, DiviCatch features live stream capture capabilities. Recording can be configured for a customized file size or duration. The application also integrates a video decoder enabling real-time decoding of all unencrypted services.

ENENSYS has implemented a new software : DiviSeries All in One Software. It allows to check any divis applications on a new and very intuitive GUI. Divicatch monitoring screens can be totally customized and loaded. User can also save file analysis (offline analysis available).

As DTTV and Mobile TV deployments keep multiplying worldwide, DiviCatch offers a cost-effective test solution for lab or head-end applications. A must-have digital swissknife for all Digital TV technicians.

### Applications

- Live Broadcast Chain Test & Monitoring
- R&D Streams or Signal Analysis Digital TV Troubleshoot
- 24/7 circular recording capable

### Benefits

- Record live baseband signals
- Validate and analyze output MPEG2 TS Layer in real-time
- Streams MPEG-2 TS over IP to any host
- Decode and display MPEG 2 services
- No limit in TS length recorded
- Multi-files endless circular recording
- Cost effective and robust
- Watch received programs
- A must-have Lab tool
- Compact and USB-self-powered device

### Characteristics

- 1 ASI input
- TR 101 290 validation (aka ETR290)
- PCR jitter graph
- MIP validation
- PID summary, PSI/SI parsing
- Advanced MPEG2-TS recording
- MPEG2-TS over IP streaming
- IP source analysis
- Compatible with Windows Vista & 7 (32b)

# DiviCatch™

## MPEG2 Stream Analyzer/Recorder

### Input Interfaces

DVB-ASI Connector	1x BNC (female) - 75 Ω 10 Kbps to 214 Mbps
-------------------	---

### Baseband Transport Monitoring

MPEG2-TS features monitored in real-time from either source:

- ASI through USB from the DiviCatch
- IP stream through Ethernet from the PC

TR 101 290  
Priorities 1, 2 and 3 implemented  
MIP Validation

Service information  
PSI/SI table display for DVB & DTMB services  
PSIP table display for ATSC services  
PID Summary

Bitrate monitoring  
Overall, by program or PID by PID

PCR Jitter  
PCR Jitter Accuracy graphs (real-time, history and density)

### Services Processing

MPEG2/MPEG4 services decoding (unencrypted programs)  
Recording of the entire multiplex to a TS file  
Real-time forward of the entire multiplex to an IP address

### Environment

Operating temperature	0 to 55°C / 0 to 122 °F
Storage temperature	-20°C to 70°C / -4°F to 158°F
Humidity	0 to 95%, non condensing

### Physical and Power

Length	115 mm / 4.5 in.
Height	61.45 mm / 2.42 in.
Width	27 mm / 1.06 in.
Weight	<100g
Power supply	USB2.0 self-powered

### Ordering codes

DVB- ASI Capture Device  
Shipped with software (Windows 2000/XP)



ENENSYS Technologies  
Le Germanium  
80 avenue des Buttes de Coesmes  
35700 Rennes  
FRANCE  
Tel (+33) 810 ENENSY  
(+33) 810 36 36 79  
Fax (+33) 299 36 03 84  
sales@enensys.com