

DIVICATCH



DIVICATCH RF™

Your own world's finest Analyzer

ISDB-T/Tb

THE **DIVICATCH RF ISDB-T/Tb** IS A **POCKET ANALYZER** CUMULATING ISDB-T/Tb LIVE RECEPTION WITH TS REAL-TIME ANALYSIS, RECORDING AND STREAM PLAYING.

The product provides two levels of **real-time analysis**:

- **RF**: measures key RF signal parameters (Level, MER, SNR, BER) and indicates the modulation parameters (**TMCC, Layers A/B/C**) as well as the **Channel Impulse Response** (CIR).

- **Transport Stream**: the 3 priority levels of ETSI TR 101 209 are implemented. Bitrate can be analyzed globally, by service, by PID. Alarm thresholds are customizable.

Baseband streams can be captured using the **ASI input** or the PC's **IP input**. File-based **offline analysis** is also available.

The events and trends analyzed over time can be stored into **report files**.

In addition, the DiviCatch RF ISDB-T/Tb can be used as a **gateway** which retransmits **over ASI** or **IP** the baseband stream coming from the RF input. The **player** functionality allows to have an **ASI output** on the same device, which represents a real added value.

ENENSYS TESTSYSTEMS has implemented a new and very intuitive GUI, DiviSuite, which provides customizable monitoring screens. The application integrates a video decoder enabling **real-time decoding** of all unencrypted services (**H.265/HEVC, H.264/MPEG-4 AVC, MPEG-1/2, AAC, MP3...**). It also features live stream capture capabilities for baseband multiplex **recording** into a TS file.

The DiviCatch RF ISDB-T/Tb, a 4-in-1 product featuring both **RF** and **baseband** analysis, and both **recording** and **player** capabilities, offers a cost-effective test solution for field, lab or head-end applications.

CHARACTERISTICS

1x RF input for ISDB-T/Tb
1x ASI input/output
IP source analysis (from PC)
RF key measurements: signal level, SNR, MER, BER per Layer A/B/C
Graphical constellation, Channel Impulse Response display
PIDs and PSI/SI parsing, PCR graphs, BTS specific analysis*
ETSI TR 101 290 validation (Priority 1, 2, 3)
Audio/Video player (H.264/MPEG-4 AVC, MPEG-1/2, AAC, MP3...)
TS record and playback
TS over IP forward (PC's Ethernet interface selection)
Compatible MS Windows XP/Vista/7/8

*Contact us for availability



- **TO TEST APPLICATIONS**
- **TO VALIDATE BOTH RF & BASEBAND**
- **TO ACHIEVE COST-EFFICIENCY ON BROADCAST NETWORKS**

APPLICATIONS

- R&D Streams or Signal Analysis
- ISDB-T/Tb Broadcast Troubleshoot
- Installation & Maintenance Test Tool
- Head-End/TX site/off-air analysis
- Portable Demonstration Setup

BENEFITS

- 4-in-1 product: RF + Baseband + Recorder + Player
- Compact (135 x 62 x 27 mm, **160 g**) and USB self-powered device
- Receive live ISDB-T/Tb signals
- Analyze/Validate TS Layer in real-time
- All modulation schemes supported (DQPSK, from QPSK to 64QAM)
- Add your own table and specifications Analysis (PSI/SI ...)



TECHNICAL CHARACTERISTICS

RF

Connector In	1x F-type female - 75 Ω
Sensitivity	-80 to 5 dBm / 28 to 114 dBμV
Frequency range	40 to 1000 Mhz
Channel bandwidth	6, 7 & 8 MHz
Modulation	DQPSK, from QPSK to 64QAM

DVB-ASI

Connector In/Out	1x BNC female - 75 Ω
Max bitrate	140 Mbps

USB Data connector

1x USB2 B-Type

Power supply

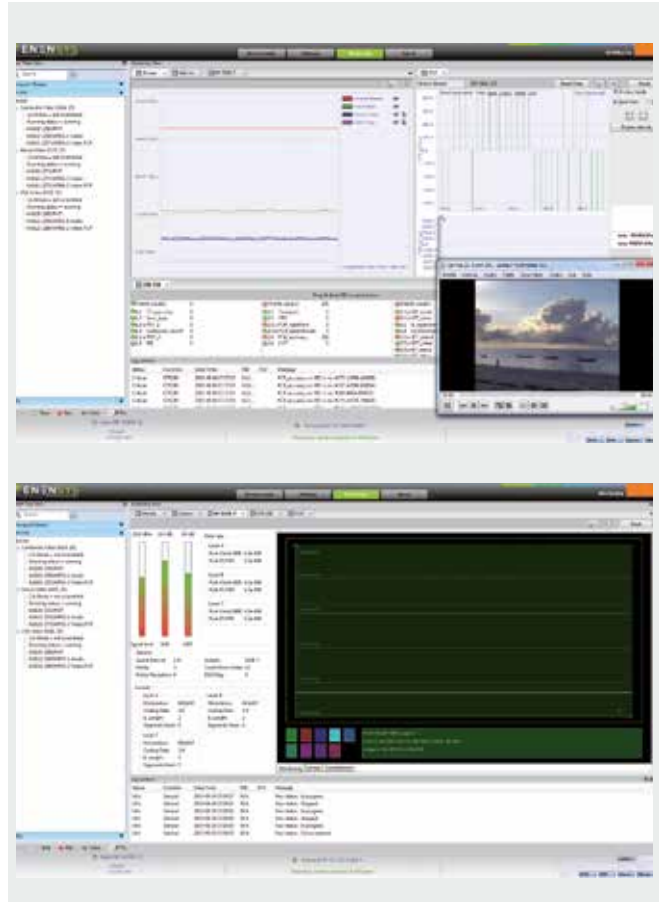
USB self-powered

Environment

Operating temperature -20 to 55 °C / -4 to 131 °F

Physical

Dimensions 135 x 62 x 27 mm / 5.3 x 2.4 x 1 in
Weight **160 g**



RF MEASUREMENTS

All measurements are made in real-time

Graphical display	Constellation, Channel Impulse Response
Signal level	-90 to 5 dBm / 18 to 114 dBμV (0.1 dBm resolution)
SNR	0 to 40 dB (0.1 dB resolution)
MER	0 to 32 dB
BER	Post-Viterbi, Post-RS PER per Layer A/B/C

SERVICES PROCESSING

MPEG-2/MPEG-4 services decoding (unencrypted programs): video stream display
Recording of the entire multiplex (MPTS/SPTS) into a TS file
Real-time forward of the entire multiplex to ASI or IP (unicast or multicast over UDP streaming)

STREAM PLAYING

Offline TS file stream analysis
Loop/segment play modes
Stream playlist handling
Bitrate auto detection with PCRs
Null Packet Removal

BASEBAND TRANSPORT MONITORING

BTS analyzed in real-time from either source:

- ASI or RF through USB from the DiviCatch
- IP from the PC's Ethernet interface

Or analyzed offline from source:

- TS file

ETSI TR 101 290

- Priorities 1, 2 and 3

Service information

- PSI/SI table display for DVB
- PID Summary

Bitrate monitoring

- Overall, by Service (Program), by PID

PCR

- PCR Accuracy graphs

ORDERING CODES

DiviCatch RF ISDB-T/Tb ISDB-T/Tb Analyzer
Shipped bundled with DiviSuite software for MS Windows XP/Vista/7/8
Providing stream overview, video decoding, stream recording, stream player*

Plugins **RF Scope**
TS Analyzer

RF Analysis
TS Analysis

*Contact us for availability

sales@enensystem.com

www.enensystem.com