

**Cost Effective, Super Reliable, MPEG-2 or H.264 Repeating Transport Stream Payout Server or Clip Server with ASI Payout. No Fans or Motors. (Transport Streams Originate from the On-Board Flash Card Reader.) Suitable for Both Broadcast Video Clip Looping of In house Channel or Out of Services messages, Ideal “Install and Forget” Device to Install at Transmitters, Etc., as a Signal Source for Promo Channels. Ships with Encoded Color Bars and Video Clip of San Diego.**



Front



Back



## Features

- DVB-ASI output
- Plays back MPEG-2 and H.264/AVC (MPEG-4 Part 10) transport streams
- Compatible with HD or SD streams
- Flash Drive lets you build, maintain, and use a large local library of Video Clips
- Supports both SPTS and MPTS
- Supports VBR or CBR
- Field upgradeable content via card swap
- Maximum output bit rate: 50 Mbps
- Requires very little power
- Comes with color bars and sample Transport Streams
- Ships with “wall” power supply
- Flash Card can be loaded by customer with TS
- Uses industry standard Flash Memory Cards
- Ships with Video ReDo I frame TS cutting tool and USB to memory card adapter
- Maximum capacity 4 GB

## Applications

- Emergency payout server
- Emergency Alert Message server
- Trade show signal source
- Digital signage
- Test Signal generator
- MPEG source at transmitter sites
- Transmission/Loopback Video Source

## Overview

Transport streams are packetized MPEG streams with meta data, created by broadcasters to transmit video between various locations. ASI is a convenient physical interface for transport streams.

The **Loop Source ASI™** is a highly reliable transport stream server that is designed to continuously play short or long compressed video clips. There are no motors or fans to fail.

It is designed to provide continuous transport streams that are on the flash card as long as power is present.

The Loop Source ASI is designed for 24/7 operation and has been designed to be extremely reliable.

This product was designed to provide “always on” and reliable 1 to 50 Mbps MPEG-2 or H.264 transport streams to devices where “Set and Forget” is desirable.

Sample transport streams and color bars are included with the Loop Source ASI. Additional transport streams can be requested at time of purchase.

We have the capability to encode color bars and add your call letters as an overlay. This is optional.



**Computer Modules, Inc.**

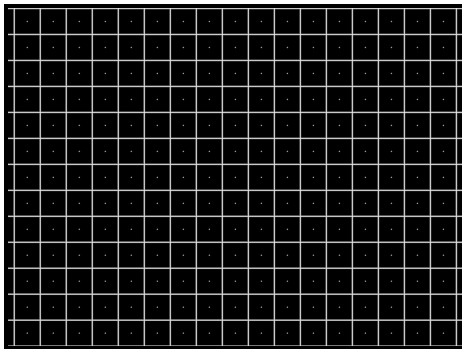
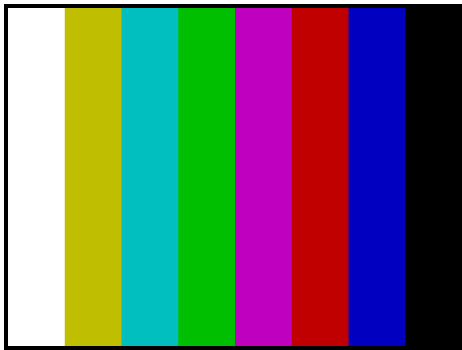
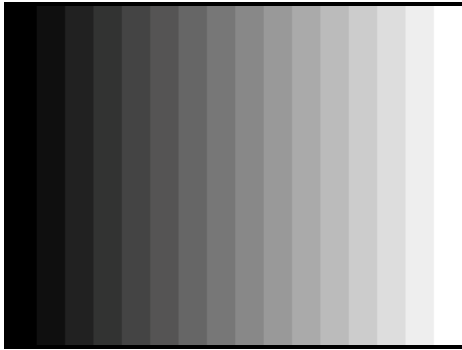
11409 West Bernardo Court

San Diego, CA 92127

Tel: 858-613-1818 Fax: 858-613-1815

[www.dveo.com](http://www.dveo.com)

## Color Bars



## Specifications

### LEDs

The three LEDs in front of the unit function as follows:

<b>Power – Top LED</b>	Power LED	ON = Power On	OFF = Power OFF
<b>Status 1 – CD – Middle LED</b>	Play LED	ON = Device playing TS	FLASHING = Playing not activated due to issues
<b>Status 2 – LCK – Bottom LED</b>	Lock	ON = Device is locked to ASI	FLASHING = No Lock

### Inputs/Outputs

Input:	Transport stream file on flash card memory
Output:	DVB-ASI
Connectors:	75 Ohms BNC
Maximum Bitrate:	50 Mbps

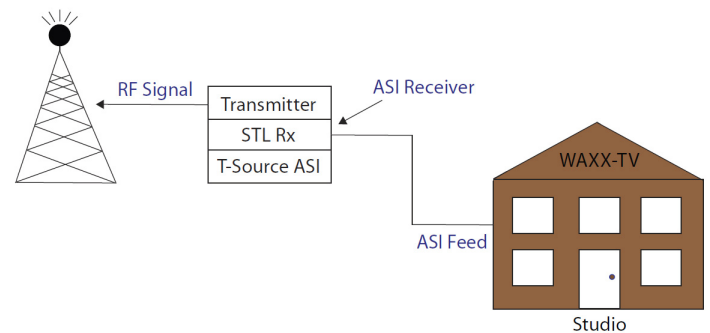
### Physical & Power

Power:	Input Voltage: DC, USB Power Consumption: 7 watts
Dimensions (WxDxH):	5.5" x 5.1" x 1.2 inches (140 x 130 x 30 mm)
Weight:	1.2 lbs. (0.544 Kg.)
Conformities:	CE, RoHS

## Rear Connectors



## Typical Application



## Ordering Information

Loop Source ASI