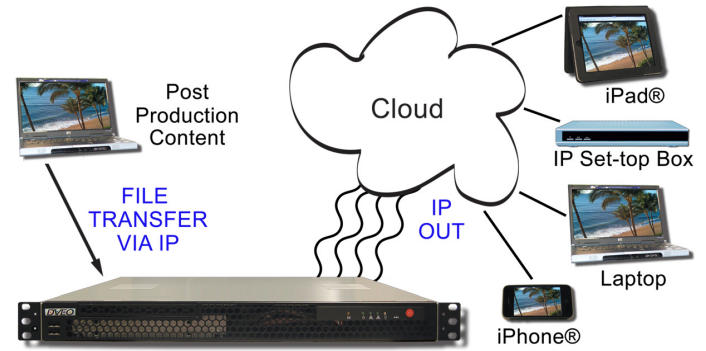


# Infinity IP Server™ (mini) 50ch 2TB

Real Time, 1 RU, Quick Starting, Embedded Linux® Based, Remotely Manageable, Multi Channel Streaming Playout Server for Content. Incorporates a Scheduler. Runs on an Intel® Xeon® CPU. Relies on a "Minimal" Linux® Kernel (Residing in a Flash Memory Device) that is Highly Task Optimized for Streaming Many Channels, Operated via a Friendly GUI that can be Run From Anywhere. Specifically Designed for Playing Continuous Streaming to and from Hard Drive. Outputs up to 50 IP Streams at the Same Time. Create Your Own 50 "Streaming" Web Channels with 50 Different Movies or Content Playing on Your Preset Schedule.



## Features

- Streams multiple output protocols from the on board 2 TB hard drive
- Use individual files or multiple playlists for input
- Watch Folder Mechanism for updates
- Scheduler for streaming via NTP
- Output HLS with MP4, H.264, or optional H.265 ts files
- Expandable Hard Disk via SANs, etc.
- Outputs: Fifty simultaneous IP streams through GigE port (RJ45)
- IP output protocols: UDP, RTP, RTMP (Open Flash), HTTP, with DLNA support
- Support for adaptive bitrate streaming protocols such as HTTP Live Streaming and MPEG-DASH
- Supports M3u8 playlist files (standalone and through HTTP Live)
- Supports any resolution you provide
- Tested compatible with major brands of IP devices including Amino™, Roku®, Telergy, Android™, and Apple iPad® and iPhone®
- Supports Verimatrix® VCAS™ and other rotating key servers
- Remote GUI includes some scheduling
- SNMP, REST, SOAP support for remote management and monitoring
- Can be configured for "Looping" continuously

## Overview

Many web sites now offer video streams over IP available on demand. The world however needs a multichannel web streaming oriented video server that is flexible and easy to use.

The **Infinity IP Server™** is a multichannel TS server with scheduling. It streams multiple HLS, RTMP, or .ts video and audio files from the on board SSD and 2 TB drive, with scheduled playlists. SSD's eliminate the need for RAID to obtain maximum performance.

The Infinity IP Server stores content as transport streams and adds various "Wrappers" such as HLS, etc. at time of departure. The system can output a great many streams at the same time. The limit is the network interface.

The input of the stored content is stored on the hard drive via FTP file transfer. We are adding a drop folder soon.

Input can be individual files or multiple files. Numerous formats and file types are supported, including HLS, RTMP, H.264 ts, flv, H.264 ps, .mov, VC-1 (.wmv), mkv, and others. The Infinity IP Server naturally supports loopable playback.

This system is continually tested with the latest Atlas™, Wowza®, and Adobe® Flash® servers, and many CDNs.

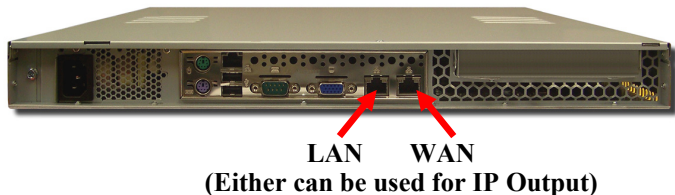
## Applications

- Signage server for continuous streaming of multiple channels to multiple end points and devices
- Streaming Server that resides at ISP or CDN for continuous scheduled or looped streaming service to publish to your web site
- Build your own streaming utility with streams you prepared that are ready to play
- Great Movie Player for your school or small hotel
- Video Hosting for ISP's, etc...
- Stream capture and playback

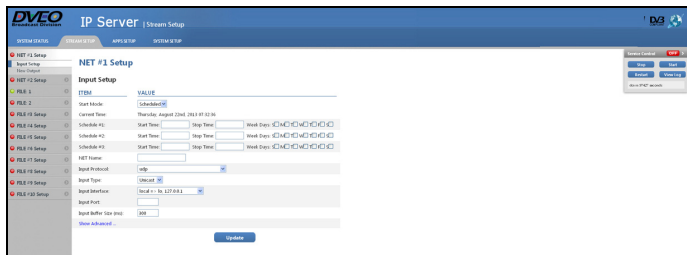


Computer Modules, Inc.  
11409 West Bernardo Court  
San Diego, CA 92127  
Tel: 858-613-1818 Fax: 858-613-1815  
[www.dveo.com](http://www.dveo.com)

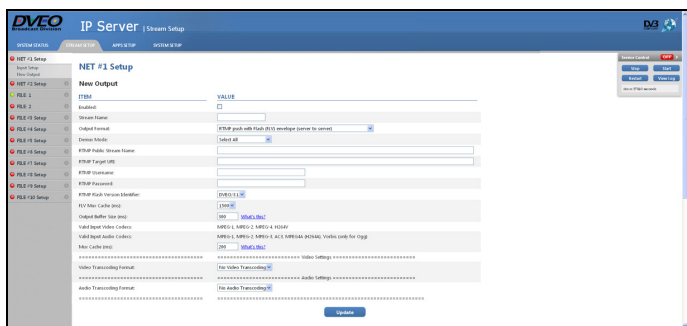
# Inputs/Outputs



# Sample of GUIs



Scheduled Input Setup



IP Output Setup

# Ports Utilized

Protocol	TCP Ports	UDP Ports
HTTP	80, 8000, 8001, 8080, 1-65535 (out)	
HTTPS	443	
RTMP		1935
RTP		6970-6999, 16384-32767

# CDNs Tested With:

1. Akamai\*
  2. Limelight
  3. Tata
  4. Octoshape
  5. CDNNetworks
  6. Internap
  7. Highwinds
  8. Verizon\*
  9. Ustream\*
  10. Mirror Image
  11. Tulix\*
  12. More to come!
- \*Certified

# Ordering Information

Infinity IP Server 50ch 2TB in 1 RU system

# Specifications

## Supported Resolutions – Input and Output

1920 x 1080	720 x 480	480 x 480	qHD
1280 x 720	704 x 480	480 x 320	H.264up
720 x 576	640 x 480	320 x 240	

Also supports any custom resolution not listed here.

Note: Supports closed captions.

## Input

File Types Supported:	H.264 ts, flv, H.264 ps, .mov, VC-1 (.wmv), mkv, and others
-----------------------	---

## IP Output

Output “wrappers”:	UDP, RTP, RTMP (Open Flash), HTTP, with DLNA support
Type:	IP-multicast, IP-unicast
Video:	NTSC or PAL

## Administration

Access:	Web interface, SSH (Secure command line interface)
SNMP:	Monitoring and alerts

## CPU and Operating System

CPU:	Intel® Xeon® processor
OS:	DVEO embedded Linux® on SSD
Hard Drive:	2 TB

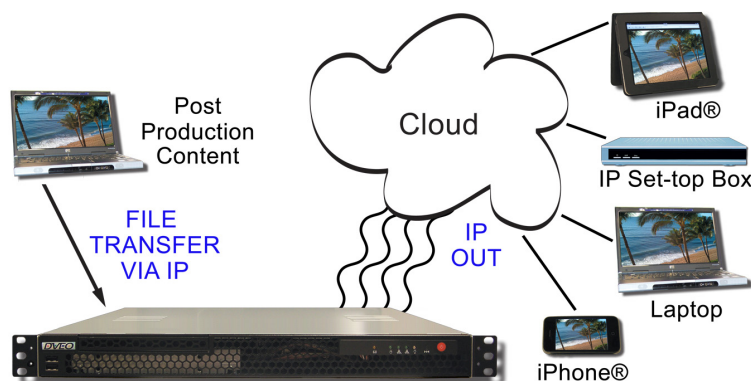
## Physical & Power

Size – 1 RU high:	19 x 14.96 x 1.7 inches (W x D x H) 483 x 380 x 43.4 mm (W x D x H)
Voltage:	100-240V, 4-2A, 60-50 Hz, 220 watts
Operating Temperature:	10°C to 35°C
Non-operating Humidity:	20% to 90% non-condensing
Conformities:	UL, BSMI, CSA, FCC, CE, RoHS
Weight:	15 lbs. (6.8 kg)

## Security

Ports security scanned to MIL requirements prior to shipment

# Block Diagram



Computer Modules, Inc.  
11409 West Bernardo Court  
San Diego, CA 92127

Tel: 858-613-1818 Fax: 858-613-1815

[www.dveo.com](http://www.dveo.com)