

PID Rearranger

Professional, Cost Effective, Multichannel, TS DeMultiplexer with 8 DVB-ASI Inputs -- Removes and/or Rearranges and Remaps PIDs from Incoming MPTS Streams. Features Two ASI Outputs. Automatically Re-generates PSI and SI Tables. PSI/SI Generator Support for DVB Table Editing. Able to Insert Electronic Program Guides and Other Data. Can be Used to Edit Existing PSIP Tables. Useful for Removing Services from MPTS Streams.



Rear



Front

Features

- De Muxes MPEG-2 and H.264/MPEG-4 AVC streams
- Two mirrored DVB-ASI transport stream outputs
- Configurable output rate
- PSIP table manipulation
- PID re-mapping and transport stream processing
- PSI/SI auto-generation and processing
- PSI/SI generator support for DVB table editing and electronic program guide (EPG) insertion
- Private data insertion
- Configures up to 40 transport streams under NIT table
- PCR check and CBR output
- Monitors all eight inputs in real time
- Configure and operate via front panel controls or web-based remote management
- Works with all major professional equipment in the market
- Will retain PID structure when any input is disconnected

Applications

- Small to medium re-multiplexing and stream processing applications
- Satellite or Cable broadcasting
- Local transport stream creation
- Head-end applications

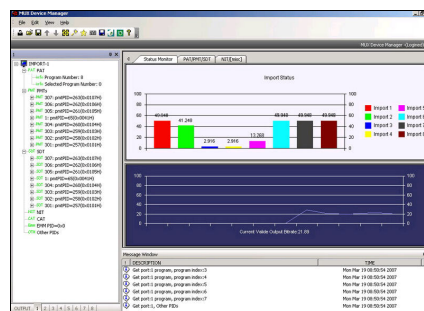
Overview

Transport streams are packetized program streams. Multi Program Transport Streams (MPTS) are multiplexes of single transport streams. Multi Program Transport Streams are used to distribute the many streams that provide us many choices for content that is streamed around via cable systems, satellite networks and terrestrial broadcasters.

Transport stream multiplexers are designed to assemble multiprogram transport streams by analyzing incoming TS's, combining transport streams, reworking the table structure, and retiming the new stream. Multiprogram transport streams create efficiencies, since RF systems can carry more than one stream at a time.

The **PID Rearranger** is a simple to use, compact, and cost-effective transport stream re-multiplexer and stream processor with ASI inputs. It can multiplex up to eight single or multiple program transport streams (SPTS or MPTS) and regenerate PSI and SI tables. The combination of powerful TS processing capability, a comprehensive feature set, and local or remote configuration makes it an ideal choice for a wide range of DTV systems for service providers.

MAIN GUI



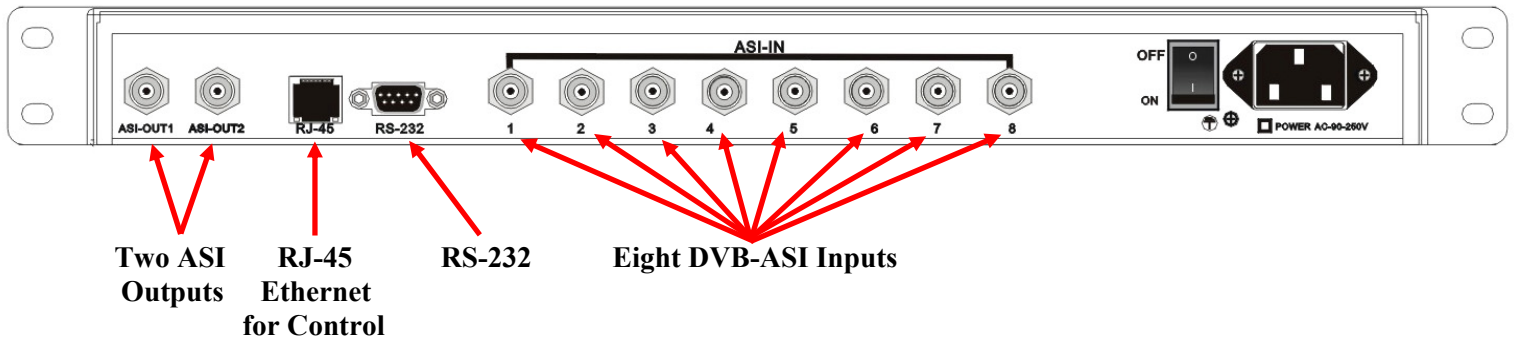
DVEO
Broadcast Division

Computer Modules, Inc.
11409 West Bernardo Court
San Diego, CA 92127

Tel: (858) 613-1818 Fax: (858) 613-1815

www.dveo.com

Rear View



Specifications

Inputs

Inputs:	Eight DVB-ASI inputs
Connectors:	F-type, 75 ohm and BNC 75 ohm
CI Slots:	F-type LNB RF loop-through output
Packet Length:	188 or 204
Input Bit Rate:	1.5 to 100 Mbps
Maximum PIDs Per Input:	255
Maximum PMTs Per Input:	60

Outputs

Outputs:	Two mirrored DVB-ASI outputs
Connectors:	BNC 75 ohm
Loop-through:	F-type LNB RF loop-through output
Audio:	Balanced Audio (XLR) output SDI Output – Digital audio embedded
Packet Length:	188 or 204
Output Bit Rate:	5 to 80 Mbps
Maximum PIDs Per Output:	255
Maximum PMTs Per Output:	45

Control & Monitoring

Local:	Front panel operation, LCD display, RS-232
Remote:	SNMP remote control for integration in centralized management software

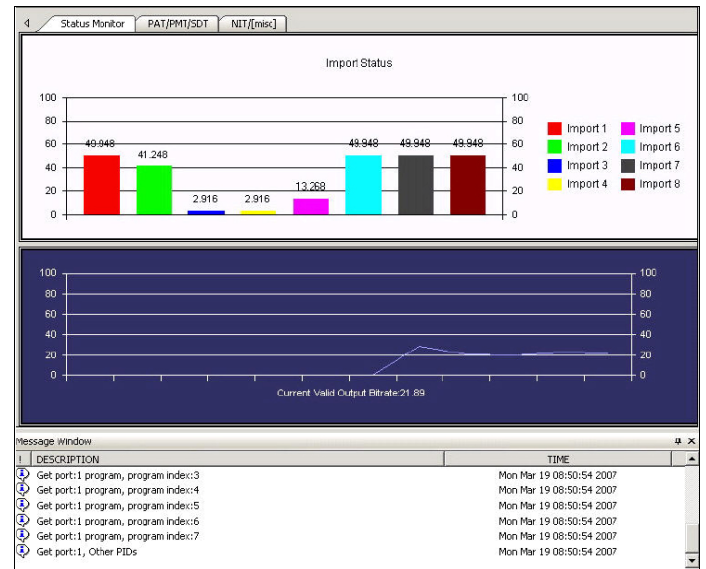
Physical & Power

Input Voltage:	AC 100V ~ 250V, 50/60 Hz
Power Consumption:	20W (maximum)
Dimensions:	1 RU 19 inch rack 17" (W) x 13" (D) x 1.7" (H) 430 (W) mm x 335 mm (D) x 44 mm
Weight:	8.82 lbs. (4 Kg.)
Conformities:	CE, RoHS

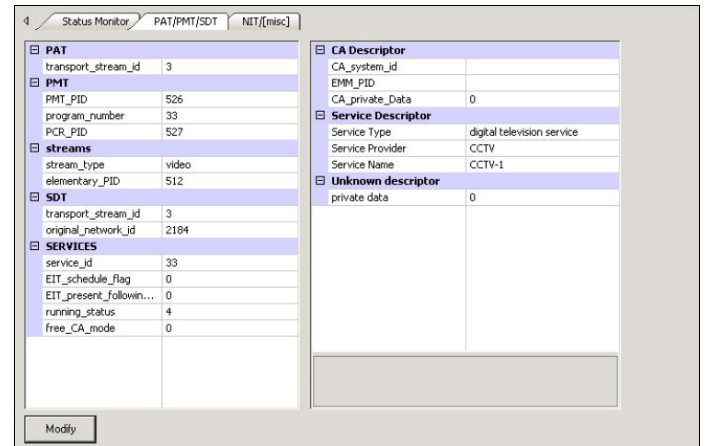
Ordering Info

PID Rearranger

Sample GUIs



Multiplexer Status Monitor



PAT/PMT Setup