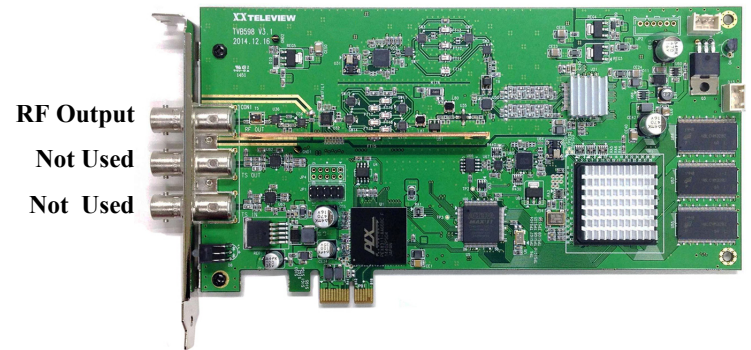


TVB598 ISDB-S

Frequency Agile, ARIB STD-B20 v3 Compatible, ISDB-S Transport Stream Modulator with PCIe Bus Input. Field Upgradeable with Other Modes. (With Sophisticated User Interface with Scheduling.) RF Output. For Digital Signage, STB Testing, and Laboratory Applications. Now ships with Windows® Based Transport Stream Player with Scheduling. Linux® and Windows® SDK Available for Customization. This Device Feeds Either an Antenna or Coax Cable. Perfect for simulating ISDB-S transmissions in a lab setting.



PCIe Version

Features

- Transmits real time video or stored video from the server hard drive and sends it to multiple HD monitors simultaneously
- Input: IP transport streams via PCIe bus or transport stream files from hard drive
- Output: ISDB-S
- RF output if content is pulled from hard drive
- Frequency agile
- ARIB STD-B20 v3 compliant
- RF Output Frequency: 36-2150 MHz
- Payload = Up to 52.17 Mbps
- Programmable RF output level (0.1 dB step)
- Can superposition white noise over modulated signal and control the output C/N ratio
- Feeds either an antenna or coax cable
- Field upgradeable – can be reprogrammed to add other profiles or new firmware
- Supplied with Windows® based Transport Stream Player application with Scheduler
- Playout Scheduler – schedule tasks (5 maximum) to run daily, weekly or monthly at a certain time
- Freq Config GUI supported via Windows® and Linux®
- Customer oriented API is also available
- Sample transport streams available
- 0dBm amplifier included

Applications

- Engineering labs
- In Store Demos of ISDB-S receivers
- Digital Signage
- Test Equipment for RF demodulators
- Hotel and Lodging video systems

Overview

RF modulators convert video to RF (radio frequency) so the video can be transmitted to a television via its RF input. ISDB-S (Integrated Services Digital Broadcast – Satellite) is the digital broadcasting standard used in Japan and Brazil for satellite broadcasting.

Our ARIB standard compatible **TVB598 ISDB-S** modulator PCIe card transmits real time video or stored video from the server hard drive and sends it to multiple HD monitors simultaneously, using RF as a carrier. The TVB598 ISDB-S can connect via an antenna or coaxial cable, and features RF output.

It is suitable for set top box testing, satellite receiver testing, laboratory applications, digital signage, and video feeds in public areas such as hotels and trade shows.

This card is *field upgradeable* – you can purchase licenses for a wide variety of additional modulator profiles and upgrade the card immediately. Modulator profiles typically used in North America include QAM, 8VSB, and ATSC 3.0. Modulator profiles typically used in Europe are DVB-T, DVB-T2, DVB-H, DVB-C2, DVB-S, and DVB-S2. Modulator profiles typically used in Asia are ISDB-T, ISDB-S, DTMB, CMMB, and T-DMB.

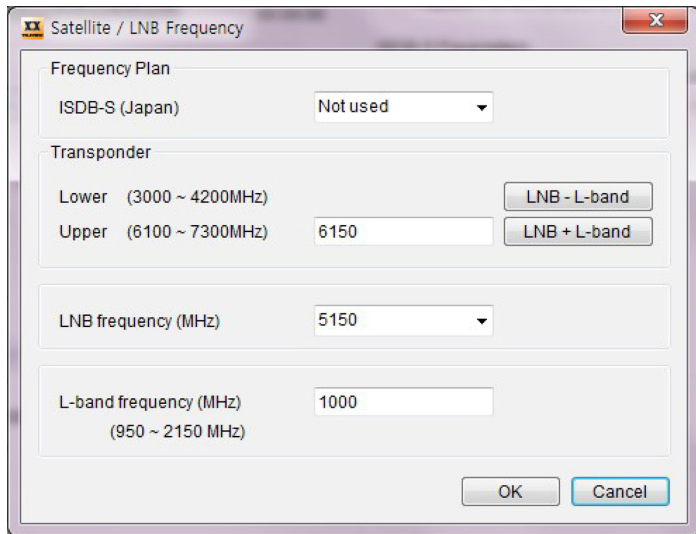


Computer Modules, Inc.

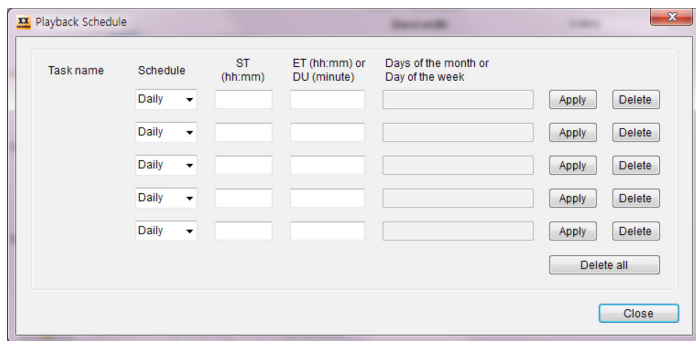
11409 West Bernardo Court
San Diego, CA 92127

Tel: (858) 613-1818 Fax: (858) 613-1815

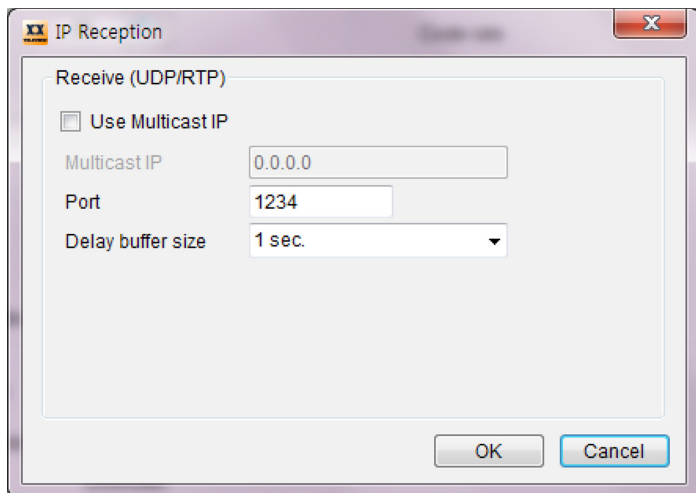
www.dveo.com



Set LNB Frequency



Playout Scheduler



Configure IP Input

Transport Stream Input	From IP through PCIe bus
Bit Rate	Up to 52.17 Mbps
RF output	Connector: 75 ohm BNC Frequency: VHF/UHF 36~2150 MHz Level: VHF/UHF -31.5 to 0 dBm Freq accuracy: Within 3ppm accuracy Attenuation step: 0.1 dB Phase noise <-90dBc/Hz @ 10 KHz
PCIe Bus	PCI express x1 compliant
Dimensions	HxWxL: 20 x 110 x 220 mm (.79 x 4.33 x 8.66 inches)
Drivers	Windows® 7/8/10 32 bit/64 bit, 2000, XP (32/64 bit), Vista (32/64 bit), 7 (32/64 bit), WDM, Linux® 32 bit/64 bit
Operating Conditions	Temperature: 0~50° C (32 to 122° F) Humidity: 10% ~ 90%, Noncondensing
Conformities	FCC, UL, RoHS, CE Mark

ISDB-S Specifications

Standard	ARIB STD-B20 v3 compliant
FEC	Inner: Trellis, convolutional coders Outer: RS (204, 188)
Modulation	TP8PSK, QPSK, BPSK (hierarchical)
Code Rates	1/2, 2/3, 3/4, 5/6, 7/8 selectable
Guard Interval	*ISDB-S modulation from DVB-ASI input is not supported *Supports framed TS with TMCC (1~8 TS have 48 total slots, can be selected)

Ordering Info

TVB598 ISDB-S



Computer Modules, Inc.
11409 West Bernardo Court
San Diego, CA 92127

Tel: (858) 613-1818 Fax: (858) 613-1815

www.dveo.com