

# iCandy™ II 12 Channel 4K IP: TELCO

Real time, 3 RU, 4K Ultra HD 4:4:4 Live multiple HD-SDI or HDMI inputs H.265/HEVC or H.264 SDI encoder/decoder/transcoder/streamer plus recorder. Features 12G SDI inputs and IP outputs, or IP inputs and 12G SDI outputs. Versions with HDMI or Analog input and output are available. Can also save output to file formats such as MXF, AVI, MOV, and MP4. Cost effective UHD/ H.265 solution. Can transcode 12 H.264 inputs to H.265.



## Features

- 4K 4:4:4 encoder/decoder/streamer/transcoder/recorder in one 3 RU system
- Based on NVIDIA® GPU
- Encoder Input: Up to 12 each 12G SDI inputs
- Encoder Outputs:
  - 12 each IP (RTSP, RTMP, UDP), or
  - 12 each file formats (MPEG2, MPEG, TS, TP, MKV, AVI, MOV, MP4)
- Optional Encoder Inputs:
  - Up to 12 HDMI or analog inputs instead of SDI inputs
- Decoder Input:
  - IP: RTP, UDP, RTSP, RTMP, HTTP, MMS, MMSH, HTTPS, NewTek™ NDI®, and WebRTC
  - File formats (MPEG2, MPEG, TS, TP, MKV, AVI, MOV, MP4)
- Decoder Outputs: 12 each 12G SDI outputs
- Supports chroma 4:4:4, 4:2:2, and 4:2:0
- Supports 4K (3840 x 2160p), 2K, 1080p, 1080i, 720p, 480i, 480p
- Upscales or downscales output from SD to UHD or UHD to SD
- Input signal conversion and file recording such as MXF, AVI, MOV, MP4
- Maximum UHD resolution SDI/HDMI/Analog signal input/output possible
- Preview generator provides real time monitoring of input sources
- Error detection algorithm supports lost video/audio, freeze/black/still frame, audio silence
- SMTP, Logging, Alarm supports
- Up to 12 channels real time 4K encoding and output as A/V signal

## Overview

Broadcasters and content providers are eager to meet viewers' growing demand for the highest possible quality video capture of sports, special events, and celebrations. These high quality streams are usually distributed by high bandwidth delivery mechanisms like satellite links, microwave, or conditioned lines. Simultaneously there is a need for immediate delivery of this content via the internet at lesser quality.

This is a very versatile device based on an NVIDIA® GPU. The iCandy II 12 Channel 4K IP: TELCO encoder inputs 4K via multiple SDI or optional HDMI or analog inputs. (It outputs the encoded or transcoded streams via its 10 Gig IP port.) It also saves the resulting 4K streams to various file formats for archiving to on board 3 TB HDD.

## Applications

- 4K news, satellite, and sports contribution from multiple cameras
- 4K event streaming via ISPs or CDNs
- Transcoding multiple 4K HEVC streams to H.264



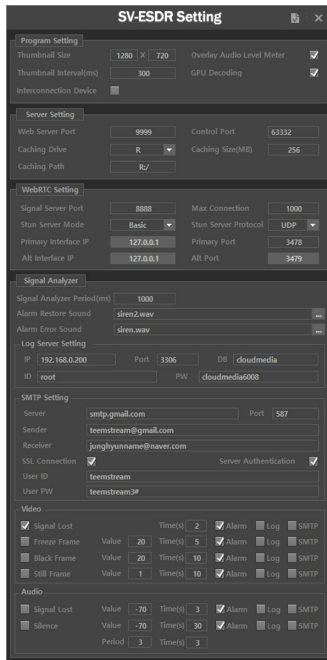
Computer Modules, Inc.

11409 West Bernardo Court

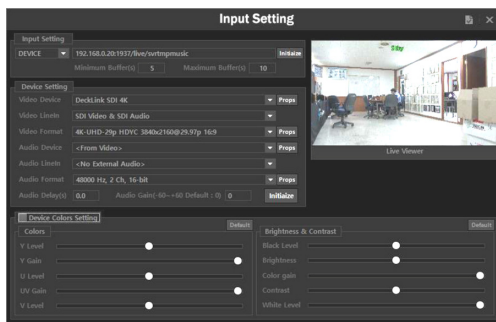
San Diego, CA 92127

Tel: 858-613-1818 Fax: 858-613-1815

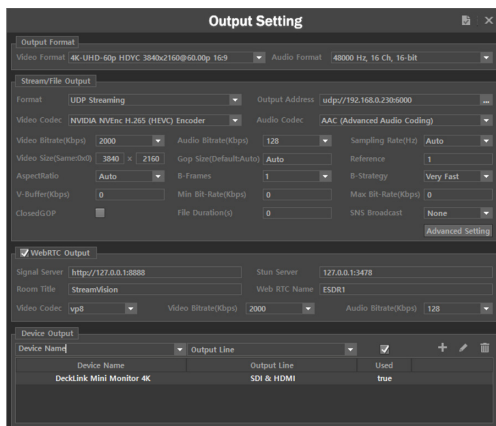
[www.dveo.com](http://www.dveo.com)



**Main GUI**



**Input Settings**



**Output Settings**

## Ordering Information

iCandy II 12 Channel 4K IP: TELCO -- XXXX  
 XXXX: HD-SDI or HDMI

## Capabilities

- Supports TCP based stream protocol reconnection
- Software support for remote computer screen/voice
- Supports H.265 (HEVC), H.264, MPEG2, VP8/9, DivX, Xvid, WMV real time compression/stream/save
- Supports various file storage formats such as MPEG2, MPEG, TS, TP, MKV, AVI, MOV, MP4, etc.
- Play video/sound source/image file sequence and use it as a source (Clistpl)
- Supports audio mixing and 16-channel audio processing
- Audio level-meter
- Supports de-interlacing, audio monitoring, aspect settings
- Supports VBR/CBR mode Audio level-meter
- Supports CUDA, OpenCL, Intel QSV H.264/AVC GPU acceleration 4K

## Interoperability

- Supports 100% interoperability with other systems through ISO/IEC ITU-T 13818-2 MPEG2-TS international standard codec support
- VFW/DirectShow® standard compatibility with capture devices (Deltacast, Decklink, AJA, Osprey, BlueFish, etc.)
- Supports Facebook, YouTube, Zoom, Skype, Hangouts, etc.
- 100% compatible with IP Cameras, nDVR, WME (Windows Media Encoder), FME (Flash Media Encoder) and other encoders
- Supports SD/HD 4K V/A signal, network streams, NewTek™ NDI®, WebRTC input/output and supports no-delay software for broadcasting remote computer screen/audio signals

## Specifications

### Encoder Inputs

Video:	SDI – 12G, 3G, or 1.5G Optional HDMI or analog input instead of SDI via Blackmagic
Audio:	Embedded

### Encoder IP Output

Video:	One to twelve 4K H.265/HEVC or H.264 transport streams
Audio Output:	Embedded pass-through
Ethernet:	Two 10 GigE ports
Output protocols:	RTSP, RTMP, UDP
Type:	IP-multicast, IP-unicast
Chroma Formats:	4:4:4, 4:2:2, and 4:2:0

### Encoder File Output

File Formats:	MPEG-2, MPEG, TS, TP, MKV, AVI, MOV, MP4
---------------	--

### Optional Encoder Outputs

Video:	Optional outputs: HDMI, SDI, analog, file recording via Blackmagic
Audio:	Embedded

### Decoder IP Inputs

IP:	RTP, UDP, RTSP, RTMP, HTTP, MMS, MMSH, HTTPS, NewTek™ NDI®, and WebRTC
Audio:	Embedded

### Decoder File Input

File Formats:	MPEG-2, MPEG, TS, TP, MKV, AVI, MOV, MP4
---------------	--

### Decoder Outputs

Video:	SDI – 12G, 6G, 3G, or 1.5G Optional HDMI or analog input instead of SDI
Audio:	Embedded

### Platform

3 RU, dual power supply, dual 10 GigE ports
---



**Computer Modules, Inc.**  
 11409 West Bernardo Court  
 San Diego, CA 92127

Tel: 858-613-1818 Fax: 858-613-1815

[www.dveo.com](http://www.dveo.com)